

**ANNUAL REPORT**  
**2017-18**





# ABOUT BREAST CANCER FOUNDATION



Breast Cancer Foundation (BCF) is a non-profit organisation with the mission to eradicate breast cancer as a life-threatening disease. Set up in 1997, BCF is committed to raising awareness about breast cancer through talks, events and publications that advocate early detection through regular screening, as well as supporting survivors and their families through various befriending and training activities. As one of the few advocacy groups in the world with a Men's Support League that was integrated with Caregiver Support Group in year 2017, BCF aims to encourage greater male participation in society's fight against this affliction. As an Institution of a Public Character (IPC), BCF promotes its cause to the community with generous support from corporations, institutions, schools and the community.

Registry of Societies Registration No: ROS 207/97/TAP (30/9/97)

Charity Registration No: 1286 (22/10/97)

UEN S97SS0137L

IPC#: HEF0051/G Expiry: 15/2/2020

NCSS Member since 1 March 2013

# CONTENTS

Mission and Vision .....	04
President's Message .....	05
Patron and Executive Committee (EXCO) .....	07
Organisation Chart .....	08
Sub-committees and Management Team .....	08
Corporate Governance .....	09
Highlights of the Year .....	12
a. Overview	
b. Raising Awareness about Breast Cancer and Advocacy for Early Detection	
c. Enhancing Accessibility to Mammogram Screening	
d. Support for Breast Cancer Survivors and Caregivers	
e. Engagement with Public, Corporations and the Community	
Acknowledgements .....	31
Statement by the Executive Committee and Financial Statements .....	33





## OUR MISSION

To eradicate breast cancer as a life-threatening disease.



## OUR VISION

- To be the charity organisation that firmly advocates early detection to save lives and breasts of women in Singapore.
- To be the catalyst of change for society's perception of breast cancer by educating the young and old, irrespective of gender, ethnicity and social background.
- To see a decline in breast cancer mortality by encouraging women to empower themselves to go for regular screening.
- To be acknowledged for dedicated care and love for the community through its support services for breast cancer patients and families.
- To provide support to men whose lives are impacted by their female loved ones afflicted with breast cancer.
- To be recognised as a pillar of support for families, caregivers, employers and healthcare professionals who influence the lives of women with breast cancer.
- To inspire corporations, institutions, individuals, organisations and the community at large to extend their support for our cause by volunteering their time and resources.



## PRESIDENT'S MESSAGE



**"It is not the mountain we conquer, but ourselves."**  
- Sir Edmund Hillary

2017 was a significant year for Breast Cancer Foundation (BCF) as we celebrated our 20<sup>th</sup> year of commitment towards breast cancer advocacy and support in Singapore.

In 1997, it was perceived that there was a lack of public awareness and support for women diagnosed with breast cancer. This led a group of men and women, largely from the lay-led community, to form BCF, with Mrs Yu-Foo Yee Shoon, the former Minister of State for the then Ministry of Community Development, Youth and Sports, as the first Patron. This passion continues to live on in BCF, through strong partnerships with families, policymakers, healthcare institutions, the corporate community and community-based organisations.

Despite awareness efforts having been increased over the years locally, less than 40% of women aged between 50 to 69 have had a mammogram screening<sup>1</sup>. This is significantly lower when compared with the mammogram screening rate of 71% in the United Kingdom<sup>2</sup> and about 56% in Australia<sup>3</sup>. Despite the excellent medical support, infrastructure and various subsidies available in Singapore, our low mammogram screening rates could imply that women do not appear to make regular screening a priority.

A nationwide survey conducted by BCF in 2017 revealed that the majority of the 1,005 women surveyed have limited knowledge of breast cancer. Notably, six out of 10 women surveyed who did both breast self-examinations and medical checks indicated that they were knowledgeable about breast cancer, verifying the growing significance of awareness-building.

The findings show that more needs to be done for women to adopt breast cancer screening as part of their regular health routine. As early detection can increase the treatment options, effectiveness and affordability of breast cancer care, it is critical for BCF to further educate women on the importance of regular breast screenings which includes monthly breast self-examinations, annual clinical examinations, and mammogram screenings for eligible women.

Breast cancer is a societal issue - which is why BCF is not a for-women-by-women organisation. When a woman is diagnosed with breast cancer, her family and the wider community are also impacted. Therefore, men play a vital role in encouraging the women in their lives to screen regularly.

This was reiterated by Ms Indraneel Rajah, the former Senior Minister of State for Finance and Law at BCF's 20<sup>th</sup> Anniversary Pink Ribbon Charity Gala held on 29 September 2017. She said, "more should be done to encourage women to come forward to be screened. Men too, can play an important role. Please start by encouraging the women in your lives to go for screening. If you have loved ones around you going through cancer, be the pillar of strength and support for these women by providing the support and encouragement they need."

She also encouraged companies to play their part. Ms Indraneel added, "employers can promote health in the workplace by encouraging staff to go for health screening. Exercise and keeping fit is important, and employees need to be reminded and encouraged to do so. Additional workplace support for those undergoing treatment will be well-meaning and I'm sure, well-appreciated."

These are wise words to be heeded, especially in an ageing and dual-income society in Singapore where women comprise over 50% of our population and workforce.

As the incidence of breast cancer is expected to rise in Singapore against the backdrop of an ageing population, BCF's mission to save lives by promoting early detection is one that should resonate with and involve everyone.

<sup>1</sup>Source: Health Promotion Board's Health Behaviour Surveillance of Singapore, 2015

<sup>2</sup>Source: Take-up of breast screening drops to lowest level in a decade, The Telegraph, 31 January 2018

<sup>3</sup>Source: Breast cancer in Asia, The Challenge and Response by the Economist Intelligence Unit, 2016



2017 also epitomised BCF's emphasis on partnerships with the launch of the Community Mammobus Programme (CMP) on 1 February 2018, in partnership with Singapore Cancer Society (SCS) and National Healthcare Group Diagnostics (NHGD). This is particularly meaningful for BCF as we had originally launched Singapore's first Mammobus in year 2000. This first mobile mammography service in Southeast Asia screened more than 22,000 low-income women island-wide before it was taken over by NHGD in 2006.

Concurrently, the \$2 million BCF Encouragement For Active Mammograms (BEAM15) Phase 2 fund continues to fully sponsor mammogram screenings for 8,000 low-income women annually. This is a five-year collaboration with Health Promotion Board (HPB) which started in 2013.

BCF's survivor and caregiver support initiatives have also expanded, with our Men's Support League (MSL) being integrated into our Caregivers Support Group. In addition, Pink Ribbon Pages – a directory of support services and resources available in Singapore for women diagnosed with breast cancer and caregivers was launched in May 2017.

Every survivor's story is special. It is the reflection of personal success and testimony of a brave and inspiring individual. It validates the rationale for BCF's existence. BCF is proud of our group of survivor-members who, over the years have demonstrated that there can be life after breast cancer. Many of them are leading active lives with newfound confidence and purpose, reintegrated into the community and continue to be avid supporters and volunteers of BCF.

BCF's 20<sup>th</sup> anniversary is therefore a celebration of the resilience of breast cancer survivors and their families. It also showcases society's commitment towards this cause.

BCF is encouraged by the achievements over these 20 years but our challenge is far from over. Until and unless every woman empowers herself to screen regularly, BCF will relentlessly pursue the mission of eradicating breast cancer as a life-threatening condition.

Fundraising is a constant challenge as we are mostly self-funded. Engaging active volunteers is also key to our efforts in expanding awareness and support. Our executive committee will continue to focus on corporate governance by strengthening our policies and processes. We are also mindful of leadership renewal being key to good governance.

The strong support and encouragement from BCF's members and volunteers, the media, individual and corporate donors, who have given their time and resources over these past 20 years, are all invaluable.

On behalf of BCF, I especially wish to thank BCF's patron of 20 years, who is also one of BCF's co-founding members, Mrs Yu-Foo Yee Shoon, former Minister of State for Community, Youth and Sports. Our heartfelt gratitude for her relentless support, leadership and passion for the cause.

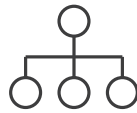
BCF's success thus far is also due to the dedication and professionalism of BCF's staff, executive committee members, sub-committee members and co-founding members, past and present. They carry BCF's name with dignity and pride. We are most appreciative to all for their support.

BCF looks forward to the next 20 years with enthusiasm and drive. We are optimistic that we can and will make considerable inroads into Singapore's mission to eradicate breast cancer as a life-threatening condition with the continuous support from all.

In so doing, we would have conquered ourselves.



**Mrs Noor Quek**  
President



## PATRON AND EXECUTIVE COMMITTEE (EXCO)



**Mrs Yu-Foo Yee Shoon**

Patron

Appointed on 22 November 1997



**Mrs Noor Quek**

President

Appointed to EXCO on  
22 November 1997



**Dr Julia Gandhi**

Vice President

Appointed to EXCO on  
25 July 2011



**Mr Ramlee Bin Buang**

Treasurer

Appointed to EXCO on  
29 June 2017



**Mr Archie Ong**

Assistant Treasurer

Appointed to EXCO on  
25 July 2011



**Mr Suhaimi Bin Zainul Abidin**

Secretary

Appointed to EXCO on  
5 December 2013



**Ms Grace Ban**

Assistant Secretary

Appointed to EXCO on  
20 April 2017



**Mr Cheah Hock Leong**

Committee Member

Appointed to EXCO on  
25 July 2011



**Ms Angelina Ong**

Committee Member

Appointed to EXCO on  
14 August 2015



**Mr Andrew Tan**

Committee Member  
Appointed to EXCO on  
14 August 2015



**Mr Shailesh Ganu**

Committee Member  
Appointed to EXCO on  
28 April 2016



**Dr Esther Chuwa**

Committee Member  
Appointed to EXCO on  
25 August 2017



**Ms Kay Pang**

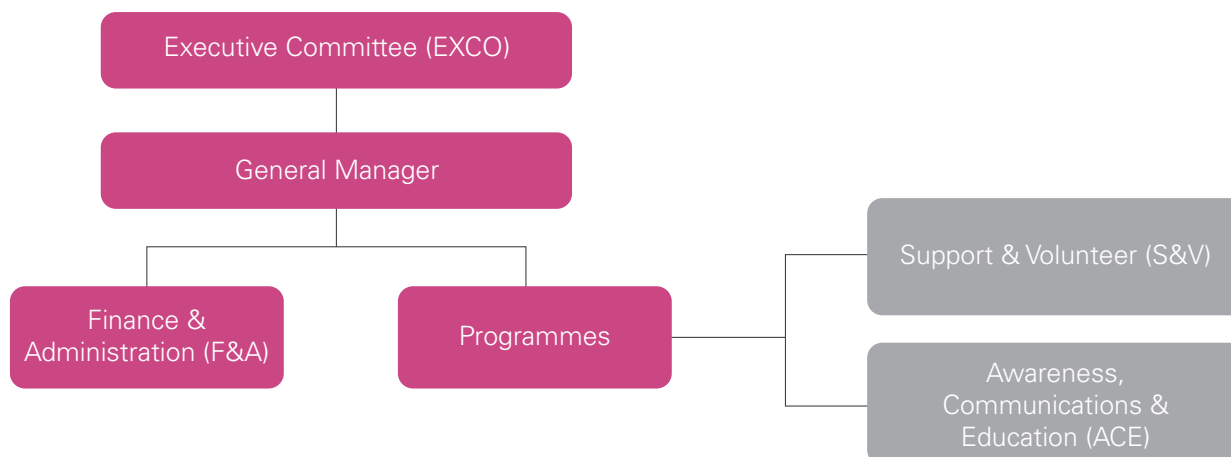
Committee Member  
Appointed to EXCO on  
14 February 2018

**EXCO member who has served for more than 10 consecutive years:** Mrs Noor Quek is one of BCF's co-founding members and is instrumental to the EXCO and management team with her experience and insights in advancing BCF's mission.

**Corporate photoshoot courtesy of BCF's Volunteer Photographer:** Mr Yee Wei Heng



## ORGANISATION CHART



Donor Management department has been integrated into Awareness, Communications & Education (ACE) department w.e.f. 1 March 2018.



## SUB-COMMITTEES AND MANAGEMENT TEAM

### APPOINTMENT & NOMINATION

**Mr Shailesh Ganu** (Chairperson)  
**Dr Julia Gandhi** (Member)  
**Mr Suhaimi Bin Zainul Abidin** (Member)

### AUDIT

**Mr Andrew Tan** (Chairperson)  
**Mr Archie Ong** (Member)  
**Mr Cheah Hock Leong** (Member)

### FUNDRAISING

**Mr Archie Ong** (Chairperson)  
**Mr Andrew Tan** (Member)  
**Mr Cheah Hock Leong** (Member)  
**Ms Kay Pang** (Member)

### HUMAN RESOURCE

**Mr Shailesh Ganu** (Chairperson)  
**Ms Grace Ban** (Member)  
**Dr Julia Gandhi** (Member)  
**Mr Ramlee Bin Buang** (Member)  
**Mr Suhaimi Bin Zainul Abidin** (Member)

### INVESTMENT

**Mr Suhaimi Bin Zainul Abidin** (Chairperson)  
**Mr Andrew Tan** (Member)  
**Mr Ramlee Bin Buang** (Member)

### PROGRAMMES

**Support & Volunteer (S&V)**  
**Dr Julia Gandhi** (Chairperson)  
**Mr Cheah Hock Leong** (Member)  
**Dr Esther Chuwa** (Member)  
**Ms Grace Ban** (Member)  
**Ms Praveena Nair** (Volunteer)

### Awareness, Communications & Education (ACE)

**Ms Angelina Ong** (Chairperson)  
**Mr Archie Ong** (Member)  
**Dr Esther Chuwa** (Member)  
**Ms Grace Ban** (Member)  
**Ms Kay Pang** (Member)

### MANAGEMENT TEAM

**Ms Anthea Kiu** (General Manager, appointed on 26 February 2018)  
**Ms Lilie Liu** (Senior Manager, F&A)  
**Mr Alvin Aw** (Manager, ACE)  
**Ms Caroline Nobleza** (Manager, S&V)





# CORPORATE GOVERNANCE

## GOVERNANCE: THE EXECUTIVE COMMITTEE (EXCO)

BCF is governed by an EXCO comprising of 12 members of the following posts to be elected at each alternate Annual General Meeting (AGM): a President, Vice President, Secretary, Assistant Secretary, Treasurer, Assistant Treasurer, and up to six Ordinary Committee Members. All EXCO members are volunteers with no business relations with BCF. They work collectively with the management team to lead BCF in advancing the organisation's corporate mission and vision.

### SELECTION AND APPOINTMENT

To ensure that BCF has an EXCO that consists of members who are committed to BCF's cause whilst ensuring high standards of corporate governance, an Appointment and Nomination Sub-committee will review, evaluate and recommend candidates to the EXCO for appointment or election at the AGM. Selection criteria of EXCO members are based on the suitability of their personal attributes, core skills competencies, and commitment necessary for effective governance.

The term of office is two years. All office-bearers may be re-elected to the same or related post for a consecutive term of office. The maximum term limit of EXCO members holding the Treasurer appointment is two consecutive years. Further re-appointment to the Treasurer position can be considered after a lapse of at least one year.

Some EXCO members who are current office holders have also held offices prior to their current term:

NAME	PAST OFFICE(S)	APPOINTMENT DATE
Mrs Noor Quek	President	25 July 2011
	Vice-President	27 July 2009
	Secretary	22 July 2005
	Assistant Secretary	31 July 2003
	Secretary	31 July 2001
	Assistant Honorary Secretary	29 July 1999
	Honorary Secretary	11 August 1998
Dr Julia Gandhi	Assistant Treasurer	7 July 2015
Mr Archie Ong	Vice-President	7 July 2015
	Treasurer	25 July 2013
	Assistant Secretary	25 July 2011
Mr Suhaimi Bin Zainul Abidin	Secretary	7 July 2015

## ROLES AND RESPONSIBILITIES

EXCO members are responsible for ensuring BCF is well-managed and delivering the mission and vision of the organisation. All EXCO members exercise independent judgement and act in the best interests of BCF. To ensure objectivity in decision-making, no paid staff sits on-board of BCF's EXCO. Decisions and approvals from EXCO members are required for the following:

- Organisation's vision, mission, goals, and objectives
- Policies, standard operating procedures, and manuals
- Annual budget, and funds
- Annual, audit, and financial reports
- Any other significant matters

## MEETING ATTENDANCE RECORD

BCF's EXCO members meet at least four times a year with a quorum of at least six members. The number of meetings attended by all EXCO members for the period of 1 May 2017 to 30 April 2018 are reflected on the table to the right. Attendance is indicated as number of meetings attended over number of scheduled meetings. As EXCO members are appointed in different periods during the term, number of scheduled meetings of each EXCO member may vary.

EXCO MEETING ATTENDANCE RECORD	
Names	Attendance
Mrs Noor Quek	4/4
Dr Julia Gandhi	4/4
Mr Ramlee Bin Buang	3/4
Mr Archie Ong	3/4
Mr Suhaimi Bin Zainul Abidin	3/4
Ms Grace Ban	4/4
Mr Cheah Hock Leong	3/4
Ms Angelina Ong	2/4
Mr Andrew Tan	3/4
Mr Shailesh Ganu	4/4
Dr Esther Chuwa	2/3
Ms Kay Pang	1/2

## EXTERNAL INVOLVEMENTS

BCF's EXCO members may take on roles with various organisations outside of BCF. The external involvements of EXCO members who are office bearers are listed below:

NAME	OCCUPATION	OTHER APPOINTMENTS
Mrs Noor Quek	Founder / CEO of NQ International Pte Ltd	<ul style="list-style-type: none"> <li>• Chairman, Audit Committee of ISCA Cares</li> <li>• Director – ISCA Cares</li> <li>• Lay Panel Member – Inquiry Panel, Law Society</li> <li>• Advisor, RHT Wealth Holdings</li> <li>• Lay Panel Member, Singapore Dental Council</li> <li>• Board Member, The Ireland Funds Singapore</li> </ul>
Dr Julia Gandhi	Advisor (Special Projects), CET Academy, Ngee Ann Polytechnic	<ul style="list-style-type: none"> <li>• Executive Committee, International Society for Pharmaceutical Engineering</li> <li>• Sub-committee Member, The British Club</li> </ul>
Mr Ramlee Bin Buang	Life & Executive Coach, Pharos Institute  Founder & Owner, Ukyo Advisory	<ul style="list-style-type: none"> <li>• Director, Centre for Fathering Limited</li> <li>• Director, Far East Orchard Limited</li> <li>• Director, Halogen Foundation (Singapore)</li> <li>• Director, National Healthcare Group Pte Ltd</li> <li>• Director, Singapore Institute of Directors</li> <li>• Director, The Esplanade Co. Ltd</li> <li>• Chair, MOH Holdings Public Healthcare Institutions Finance Shared Services Steering Committee</li> <li>• Member, Investment Committee, MOH Holdings Public Healthcare Institutions Finance Shared Services</li> </ul>
Mr Archie Ong	Financial Consultant, Prudential	<ul style="list-style-type: none"> <li>• Member, Management Committee NUSS</li> <li>• Chairperson, NUSS Community Care</li> <li>• Director, Lions Club of Singapore Nassim</li> </ul>

NAME	OCCUPATION	OTHER APPOINTMENTS
Mr Suhaimi Bin Zainul Abidin	CEO, Quantedge Capital Pte Ltd  Director, Quantedge Foundation	<ul style="list-style-type: none"> <li>• Council Member, Charity Council</li> <li>• Founding Member, Gulf Asia Shariah Compliant Investments Association</li> <li>• Director, Learning Gateway Ltd</li> <li>• Advisory Council Member, Lifelong Learning Endowment Fund</li> <li>• Director, Mendaki Sense Pte Ltd</li> <li>• Committee Member, Audit &amp; Risk Management, Mendaki Sense Pte Ltd</li> <li>• Chairman, Establishment Committee, Mendaki Sense Pte Ltd</li> <li>• Director, National Environment Agency</li> <li>• Member, Finance Sub-committee, National Environment Agency</li> <li>• Working Committee, Sustainable Singapore, National Environment Agency</li> <li>• Director, SkillsFuture SG</li> <li>• Director, Warees Investments Pte Ltd</li> </ul>
Ms Grace Ban	Freelance Corporate Adviser	<ul style="list-style-type: none"> <li>• Assistant Secretary, Board of Directors, NUS Business School Alumni Association</li> </ul>

## FINANCIAL MANAGEMENT AND INTERNAL CONTROL

Internal control systems are established and regularly reviewed by BCF's Audit Sub-committee with documented procedures approved by the EXCO for financial matters such as procurement, quotation or tender procedures, receipt and payment procedures and the delegation of authority and limits of approval.

BCF does not make loans or donations to any party.

The organisation also has a conservative investor risk profile, investing only in low risk investment instruments or investments that are principal guaranteed or assured, in the form of bank deposits, bonds, and/or other similar instruments that return capital to investors.

The Investment Sub-committee will take direction from EXCO or the Audit Sub-committee at the start of each fiscal year as to the funds available or allocated for investment purposes which comprise of excess funds not intended or budgeted to be utilised for BCF's operations for the next 12 months and will deploy such investible funds into instruments including fixed deposits, bonds, and similar or equivalent instruments.

## HUMAN RESOURCE MANAGEMENT

BCF's organisation structure, performance management system and compensation guidelines are in place according to the human resource policies. This is to ensure that BCF has an effective organisation structure, competitive compensation policies and human resource practices, as well as appropriate processes in place for staff selection, evaluation and compensation, including succession of senior management.

Compensation of staff are evaluated and reviewed in consultation with the Human Resource Sub-committee based on the following:

- Performance evaluation for the previous year against objectives and the proposed incentive payment.
- Objectives and evaluation criteria for the ensuing year.
- Proposed compensation for the ensuing year.

Staff performance is assessed by BCF's management twice annually with an appraisal exercise that consists of a mid-year and a year-end review.

## WHISTLEBLOWING POLICY

A whistleblowing policy is in place to provide a framework to promote and secure responsible whistleblowing, as well as to foster and maintain a culture of openness, accountability, and integrity within BCF. BCF does not tolerate any malpractice, impropriety, statutory non-compliance or wrongdoing by members, volunteers (including any member of the EXCO or Sub-committee), staff or service providers in the course of their work. The policy is intended to provide a channel for staff or any person to raise concerns about possible improprieties in matters of financial reporting, fraudulent acts, and other matters within the charity to ensure that arrangements are in place for independent investigations of such matters and appropriate follow up action by the Review Committee comprising the President, Vice President, Secretary, Chairman of Audit Sub-committee, and Chairman of Human Resource Sub-committee.



# HIGHLIGHTS OF THE YEAR

## OVERVIEW OF OUTCOMES ACHIEVED



**784**

Breast cancer survivors and caregivers served



**12,667**

Free mammogram screenings given to low-income women



Nearly

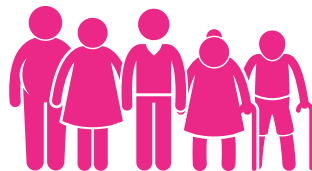
**4 million**

people reached with breast cancer awareness messages



**762**

Corporate partners and community groups engaged



**328**

Volunteers mobilised



**7,879**

Facebook likes



Over

**470,000**

people reached through year-long social media engagement



Featured on media

**116**

times with at least 9 million impressions

# RAISING AWARENESS ABOUT BREAST CANCER AND ADVOCACY FOR EARLY DETECTION

## BREAST CANCER AWARENESS MONTH (BCAM) 2017

October is recognised worldwide as Breast Cancer Awareness Month (BCAM). Every year, BCF launches a campaign to raise awareness about the early detection of breast cancer to save lives and breasts. This is done through encouraging the community to make healthy lifestyle choices and for women to conduct regular breast checks.

## AWARD-WINNING BREAST CANCER AWARENESS CAMPAIGN - COMING OF AGE



### OBJECTIVES

Inspired by lifestyles signifying the freedom of becoming a woman, an outreach campaign named 'Coming of Age' was launched in partnership with Creative Partner, DDB Group Singapore for BCAM 2017. 'Coming of Age' is a series of contextualised pop arts imitating the motion of a breast self-examination (BSE). The innovative campaign visuals highlighted the importance of early detection of breast cancer among women through regular BSE.

### OUTCOMES

Total digital outreach: **31,795**

Awards won:

- ✓ 3 Silver and 2 Bronze Awards: Creative Circle Awards Night in Singapore on 29 November 2017
- ✓ Graphite Pencil Award: 56th D&AD Professional Awards Ceremony in London on 26 April 2018

## BCAM PRESS CONFERENCE



On 3 October, BCF kicked off BCAM 2017 with a press conference attended by over 50 guests including media, donors, corporate partners, BCF's members, and volunteer representatives. A panel of speakers were invited to share their perspectives on various BCAM topics.

### KEY HIGHLIGHTS

- ✓ Flagship nationwide Situation and Needs Assessment Survey results
- ✓ BCAM's campaign theme: Coming of Age
- ✓ Unveiling BCF's 20<sup>th</sup> Anniversary Pink Ribbon Pin design
- ✓ Personal sharing by survivor and caregiver on their breast cancer journeys

### OUTCOMES

Total media outreach to public: **2,461,841**





## SINGAPORE'S NATIONWIDE INITIATIVE: SITUATION AND NEEDS ASSESSMENT SURVEY

Throughout the process of battling breast cancer - from detection, diagnosis, treatment to rehabilitation of breast cancer - survivors experience trauma and stress across various aspects. Understanding the holistic needs of survivors can help caregivers and the community better provide supportive care throughout their journey. The overall well-being of a survivor is determined by how well her informational, physical, social and psycho-emotional needs are being met.

Detection & Diagnosis

Treatment & Surgery

Rehabilitation

Palliative Care

**INFORMATIONAL NEEDS**

Survivors need to understand the nature of breast cancer, its progression, and treatment options.

- They need to know how to access and understand information (written, audio, video, etc.)
- They need to know how to access and understand information (written, audio, video, etc.)

**PSYCHO-EMOTIONAL NEEDS**

Survivors need to understand the nature of breast cancer, its progression, and treatment options.

- They need to know how to access and understand information (written, audio, video, etc.)
- They need to know how to access and understand information (written, audio, video, etc.)

**PHYSICAL NEEDS**

Survivors need to understand the nature of breast cancer, its progression, and treatment options.

- They need to know how to access and understand information (written, audio, video, etc.)
- They need to know how to access and understand information (written, audio, video, etc.)

**SOCIAL NEEDS**

Survivors need to understand the nature of breast cancer, its progression, and treatment options.

- They need to know how to access and understand information (written, audio, video, etc.)
- They need to know how to access and understand information (written, audio, video, etc.)

In commemoration of its 20-year landmark of advocacy and support efforts, Breast Cancer Foundation (BCF) commissioned independent research agency, Blackbox Research, to assess the non-medical needs of breast cancer survivors and caregivers, and to determine next steps.

Insights were gathered through in-depth interviews with 25 breast cancer survivors and caregivers.

### Tips For Caregivers

Caregivers play a key role in survivor care. Strong and reliable caregiver support is crucial to the physical and emotional well-being of survivors. It is normal to feel overwhelmed, sometimes by caregiver responsibilities. Caring for a loved one going through breast cancer can be both physically and emotionally demanding.

- Self-Care:** While the focus tends to be on the survivors, all of the time, caregivers and helplessness will affect the caregiver's mental health as well. Caregivers need to ensure that they not only take good care of the survivors, but also of themselves.
- Help to filter:** Caregivers can help process and assess the vast volume of information with the survivors, in order to help survivors make the best decisions.
- Be Empowered:** Many caregivers feel that they cannot share their thoughts and emotions with the survivors. BCF has a Caregivers Support Group and workshops to help caregivers cope with their feelings and emotions.
- Get Support:** Most importantly, caregivers should not try to do everything by themselves. Caring is not easy, so reach out to others and organisations who can help to share the physical and emotional load.

In conjunction with BCF's 20-year landmark of advocacy and support efforts in Singapore, BCF partnered Blackbox Research Pte Ltd to conduct a nationwide study on the general public's perception and awareness about breast cancer and the psychosocial needs of breast cancer survivors and caregivers. Equipped with these survey findings, BCF will work to identify opportunities and strategise solutions to sharpen the organisation's strategic thrusts in awareness-building and supporting survivors and caregivers in the areas of cited unmet psychosocial needs, as well as empowering corporate partners and healthcare professionals to create an integrated network of support in Singapore.

### KEY HIGHLIGHTS

- ✓ First of its kind nationwide study by BCF
- ✓ Phase 1: Online survey across 1,005 women and 980 men
- ✓ Phase 2: In-depth interviews with 25 breast cancer survivors and caregivers

## Survey: General Public's Knowledge, Attitudes and Practices around Breast Cancer in Singapore

### Positive Outlook on Breast Cancer among Singaporeans



### Significant Need to Increase Breast Cancer Awareness among Singaporeans

### General Consensus on the Importance of Regular Breast Checks and the Perception of Danger



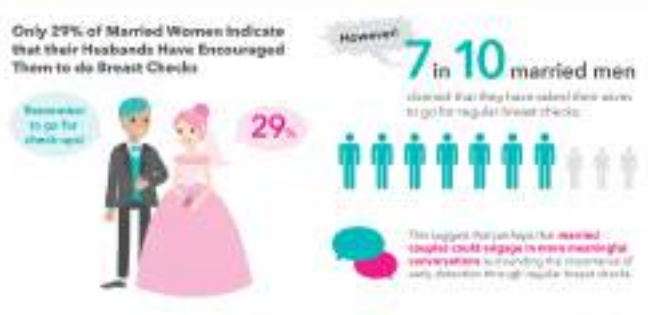
### Majority of Singaporean Women are Not Protecting Themselves Through Recommended Breast Checks

### Women with More Knowledge of Breast Cancer Have Taken Action



### It's Not Just About Her: Men as Advocates and Pillars of Support

Men can contribute to breast cancer awareness and early detection amongst women



The study was conducted amongst 1,005 women and 930 men, using an online methodology with a nationally representative sample.



## KEY SURVEY FINDINGS

- Most Singaporeans' perceptions around breast cancer and treatment outcomes are positive, indicating success in public awareness initiatives of propagating the message, 'Early Detection Saves Lives, Saves Breasts'.
- Both men and women still have limited knowledge of breast cancer, especially those below the age of 45. This signals the need to further increase the level of awareness.
- Most women who conduct regular breast self-examinations and/or go for regular mammogram screenings are more knowledgeable about breast cancer, especially those who have heard of, or personally known of someone who is diagnosed.
  - ✓ 4 main psychosocial needs are mapped against the average journey from diagnosis, treatment/surgery to rehabilitation: Information, psycho-emotional, physical, and social needs.
  - ✓ Holistic survivor care cannot be provided in isolation because social and family support is equally as important as medical treatment in the journey of recovery.
  - ✓ The support of caregivers and the involvement of men are critical in the fight against breast cancer.

## WEAR THE PINK RIBBON (WTPR) CAMPAIGN

The signature Pink Ribbon is the international symbol of awareness and hope for women living with breast cancer. BCF organised the annual WTPR Campaign to raise funds and spread the message that early detection can save lives and breasts.

### ACTIVITIES

In celebration of 20 years of shared courage in 2017, the design of the Pink Ribbon Pin was inspired by a combination of 20 Pink Ribbons arranged side by side. The design is symbolic of a united front with the loving support from community and corporate network that is crucial to the fight against breast cancer. The pins were available as a token of appreciation for a minimum donation of \$2 each. A total of **more than 25,000 pins** were distributed to **297** participating outlets between October and November 2017. Members of the public were encouraged to wear the pins and be spotted for a chance to win attractive prizes in BCF's 'Pin It To Win It' lucky draw.



### SPONSORS AND PARTNERS

- **Main Sponsor:** Tote Board Group
- **Logistics Partner:** Crown Worldwide Group
- **Creative Partner:** DDB Group Singapore
- **Main Prize Sponsor:** Genting Hong Kong – Dream Cruises – Star Cruises
- **Prize Sponsors:** Coach (Singapore), The Estée Lauder Companies, Shou Slimming Centre, OSIM, Jean Yip Group, Yoga Seeds & Aramsa The Garden Spa

### OUTCOMES

Participating organisations: **89**

Distribution outlets: **297**

Pins distributed: **25,437**

Volunteers: **115**



## PINK RIBBON WALK (PRW)



BCF held PRW on 7 October 2017 at the Event Square @ Waterfront Promenade to raise awareness about breast cancer, demonstrate solidarity with those affected, and reinforce the importance of a healthy lifestyle. The nationwide event saw **more than 4,000 participants** gathered to celebrate BCF's 20<sup>th</sup> Anniversary and honour those whose lives are affected by breast cancer. The event was kindly supported by main sponsor, ICAP and co-sponsors, Icon SOC and UPS Foundation.

Speaking at PRW, Guest-of-Honour Dr Ng Eng Hen, Minister for Defence and Co-founding Member of BCF, said, *"We had to turn the mentality of being victims to the disease to that of being survivors and thriving, living a full life, overcoming cancer as just one of life's many challenges – not a death sentence. The hopeful message needed to be heard, that early stage breast cancer was curable and affected women could resume their lives, and even do more after treatment. But for far too many women then, and even today, misconceptions about screening and mammograms, or just plain fear and inaction, resulted in late diagnosis and poor prognosis."*



## ACTIVITIES

- **3.5 km walk and 5 km fun run:**

A new fun run component was introduced in commemoration of BCF's 20<sup>th</sup> Anniversary. Due to its popularity, the fun run will continue in subsequent years ahead.

- **Singapore's largest Pink Ribbon Parade:**



Approximately **120** breast cancer survivors, caregivers, volunteers, healthcare professionals, and BCAM partners (National Cancer Centre Singapore and National University Cancer Institute, Singapore) dressed in 20 different Pink Ribbon themes made up of 20 vibrant contingents.

Representing a festive celebration of life after breast cancer, BCF's Paddlers in the Pink Dragon Boat Team performed a Paddler's Dance while Pink Ribbon Thread and Needles' contingent of survivors was led by Mdm Lily Chan, a breast cancer survivor and volunteer instructor of BCF's Healing Through The Arts (HTTA) programme, Sewing with Lily.

- **Charity Draw:**

BCF's Charity Draw was held from July to August 2017 to raise funds and awareness for breast cancer where members of the public could purchase charity draw tickets at Singapore Pools (Private) Limited outlets leading up to the event to contribute to BCF's fundraising efforts, and for a chance to win the grand prize worth \$10,888. Results of the draw were announced at the event.

- **Carnival:**



Amongst the carnival booths set up by participating corporate partners, a mini painting class was conducted by a breast cancer survivor and volunteer instructor, Mdm Tan Bee Bee of BCF's HTTA programme, Art Class. Hand-painted coasters by breast cancer survivors were also available for purchase at the booth.

- **Meet-and-Greet session with the cast of Mediacorp Channel 5's BRA:**



Participants met the cast of BRA, a new drama series on friendship and self-discovery starring Beatrice Chia as a breast cancer survivor along with Belinda Lee, Dhanya Nambiar, Koh Chieng Mun, Jimmy T. and Jason Godfrey.

## OUTCOMES

Total no. of participants: **4,121**

Corporate groups participation: **53**

Volunteers mobilised: **154**



## SHOP FOR THE CAUSE

As part of BCAM 2017, organisations joined BCF in the fight to heighten breast cancer awareness through limited edition launches and customer engagement initiatives, with full or partial proceeds going towards BCF's programmes.

### PARTNERS

- **Banyan Tree Hotels & Resorts**



For every night's stay at 24 participating hotels in the month of October 2017, guests received a turndown gift when they donated a minimum of USD\$2 (Banyan Tree) and USD\$1 (Angsana & Cassia) through the Green Imperative Fund (GIF) donations. As a token of appreciation, they received either a sand-filled turtle or starfish, as well as a special write-up card to raise breast cancer awareness. The hotels matched the amount donated by guests, dollar for dollar and SGD\$20,000 was donated to BCF from the total amount raised. Banyan Tree Hotels & Resorts' retail arm - Banyan Tree Gallery also gave out 20 special pink giveaways each week in the month of October to those who signed up for their e-newsletter.

- **Bridgestone Tyre Sales Singapore Pte Ltd**



A Pink Valve Cap Donation Drive Campaign was launched where 10,000 packs of four pink tyre valve caps were made available at \$4 each, alongside donation boxes at 35 participating Bridgestone dealers' and business partners' stores. All sales proceeds and donations collected throughout the campaign went towards BCF.

- **Cedele**



BCF partnered with Cedele Group to create the Pink Ribbon Cake to mark BCF's 20<sup>th</sup> Anniversary. Designed by Ms Yeap Cheng Guat, founder of Cedele Group, the Pink Ribbon Cake was marked with BCF's signature double Pink Ribbon logo and 20% of the sales proceeds went towards BCF.

- **Centenary Lodge No. 7629 E.C., Freemasonry Singapore**

Centenary Cares, the charity arm of Centenary Lodge hosted The Pink Bow Tie Ball, an annual fundraising dinner in support of BCF with special guest performances by local celebrity Nat Ho, amongst other distinguished guests. Pink-themed accessories at the event were sold with proceeds donated to BCF.

- **COMO Shambhala Urban Escape Singapore**

10 BCF's members were offered 3 sessions of complimentary group mat lyengar yoga classes per week during the month of October.



- **Crabtree & Evelyn**



With every purchase at Crabtree & Evelyn retail outlets and a \$2 donation, customers received both a Pink Ribbon Pin and a pink tote bag. All proceeds went to BCF.

- **Goodwood Park Hotel**

Every guest who ordered a curated menu or the afternoon tea buffet at the hotel’s renowned restaurants, Gordon Grill, L’Espresso and Min Jiang – received a 20<sup>th</sup> Anniversary edition Pink Ribbon Pin by BCF, where the value of the pins was donated by the hotel. In the same month, guests who wished to make a minimum \$2 donation or more for the pins could also do so at the participating dining outlets via a BCF’s donation box. All donations received went to BCF.

- **Happie Diapers**

A complimentary Pink Ribbon Pin was given to the first 60 customers who purchased Happie Diapers’ Tula Exclusive: Hope.Faith.Love Baby Carrier. \$10 went to BCF for every merchandise sold.

- **PAZZION Group**



PAZZION released a limited edition pump heels in pink suede that sported a classic ribbon design, resembling the loop of a Pink Ribbon to raise awareness about breast cancer. The heels were made available at all PAZZION outlets and e-store where 30% of the nett proceeds went to BCF.

- **Shangri-La Hotel, Singapore**



Area Executive Pastry Chef Hervé Potus extended his support for breast cancer awareness by crafting a limited edition Blossom Thought Cake. The cake was priced at \$38 nett each and \$20 was donated to BCF for every cake sold.

- **The Fullerton Hotel Singapore**

\$5 nett was donated to BCF for every Pink-themed Afternoon Tea (priced at \$50++ per person) ordered at The Courtyard.

- **Wacoal Singapore Pte Ltd**



Customers and members of the public who donated through BCF’s donation boxes at Wacoal outlets received a BCF Pink Ribbon Pin and 6 Wacoal membership Points (equivalent to \$6). Participants of Wacoal’s free measurement fitting campaign also received a limited edition car decal and Wacoal donated \$0.50 to BCF for every measurement fitting done.

## 20<sup>TH</sup> ANNIVERSARY COMMEMORATIVE EXHIBITION



BCF launched the 20<sup>th</sup> Anniversary Commemorative Exhibition on 8 May 2017 at VivoCity (Official Venue Partner). Mrs Yu-Foo Yee Shoon, Guest-of-Honour and Founding Patron of BCF officiated the occasion and unveiled the 20<sup>th</sup> Anniversary logo.

### ACTIVITIES

The overall message of the exhibition, 'Early Detection Saves Lives, Saves Breasts' was echoed and spread further to raise public awareness about breast cancer via a roving exhibition which took place in various public spaces across Singapore that showcased:

1. Inspiring stories of survivors overcoming breast cancer.
2. A trip down memory lane, through the 20-year rich history of BCF.
3. BCF's memorabilia collected over the past 20 years.
4. Hands-on education on the procedure of a breast self-examination and the process of a mammogram screening.

### OUTCOME

Total outreach: **25,300**

Number of roving exhibition's locations: **6**

## MEN'S OUTREACH CAMPAIGN



BCF launched the all-new Men's Outreach digital campaign '#ImOnYourTeam' in July 2017 to encourage men to join the fight against breast cancer. The condition is often thought of as a 'woman's issue' and there is a societal assumption that men do not have a role in it. However, when a woman is diagnosed with breast cancer, everyone in her life will be affected. Therefore, both women and men are equally important in the fight against breast cancer.

### ACTIVITIES

A community movement was conducted to rally men to pledge their support to the women around them to raise breast cancer awareness via social media. This was done by posting photos or videos of themselves with the women in their lives and encouraging them to conduct regular breast self-examinations and/or go for mammogram screenings. This was followed by an inclusion of hashtags '#ImOnYourTeam' and '#BCFSG' on their social media posts, as well as tagging three other gentlemen to do the same.

### OUTCOME

Public outreach: **495,026**

## PINK RIBBON PAGES



Pink Ribbon Pages guidebook is an informative directory for caregivers and women who are newly diagnosed with breast cancer. The e-version is also available on BCF's website.

*"Information is power. There is no 'one size fits all' treatment for any individual patient. Breast cancer can be a complex condition and knowing one's options well-enough is half the battle won."*

— Dr See Hui Ti, Medical Oncologist and former Member of BCF's Executive Committee.

## AWARENESS TALKS

One of the key focuses of BCF is to build awareness and advocate the importance of early detection through community outreach, with awareness talks tailored to the needs of the audience. From 1 May 2017 to 30 April 2018, over **50 complimentary awareness talks** were organised for corporations and the community to spread the life-saving message, 'Early Detection Saves Lives, Saves Breasts'.

### PARTICIPATING PARTNERS

Aidha Ltd	Mercer (Singapore) Pte Ltd
Ang Mo Kio Public Library	Methodist Welfare Services Senior Activity Centres @ Fernvale Rivergrove
Apple Inc	Nanyang Girls' High School
Australian and New Zealand Association (ANZA)	Ngee Ann Polytechnic
Barrington James Singapore Ltd	Northwest District Community
Becton, Dickinson and Company	Norton Rose Fulbright (Asia) LLP
Blackbox Research Pte Ltd	PAP Bukit Timah Branch
Bukit Merah Secondary School	Philips Electronics Singapore Private Limited
Bukit Timah Community Club	PineBridge Investments Asia Limited
Buona Vista Community Club	Punggol Vista Community Centre
Carlson Wagonlit Travel	Queensway Sri Munesswaran Temple
Celanese Singapore Pte Ltd	Roche Singapore Technical Operations Pte Ltd
Changi Airport Group (Singapore) Pte Ltd	Shell Eastern Petroleum Pte Ltd
Credit Suisse (Singapore) Ltd	Singapore University of Social Sciences (SUSS)
Dairy Farm Group	Society for Human Resource Management (SHRM)
Dell Inc	Sweetland Childcare
Experian Singapore Pte Ltd	The Estée Lauder Companies
GEMS World Academy (Singapore)	The Ismaili Muslim Community
Genting Hong Kong Limited - Star Cruises	UBS Asset Management
Goldman Sachs (Singapore) Pte	United Parcel Service Singapore Pte Ltd

### OUTCOMES

Corporate talks: **36**

Community talks: **19**

Total no. of participants: **2,556**

# ENHANCING ACCESSIBILITY TO MAMMOGRAM SCREENING

## COMMUNITY MAMMOBUS PROGRAMME (CMP)



On 1 February 2018, BCF launched CMP together with Singapore Cancer Society (SCS) and National Healthcare Group Diagnostics (NHGD). CMP is an initiative to provide funding assistance to make mammogram screenings even more affordable to the community, exclusively on the Mammobus. It is free for first-time Singaporean participants with a nominal fee for eligible women. The Mammobus will be deployed to various locations across Singapore throughout the year.

## BCF ENCOURAGEMENT FOR ACTIVE MAMMOGRAMS (BEAM15)

Launched in partnership with Health Promotion Board (HPB), National Healthcare Group Diagnostics (NHGD), MediRad, and SingHealth, BEAM15 is a full sponsorship programme that addresses the mammography needs of women in the low-income group so they can gain access to free mammogram screenings at polyclinics. BEAM15 Phase 2, an extension of Phase 1, is a 5-year programme running from year 2014 to 2019 for women between the ages of 50 to 69, with a fund of SGD\$2,000,000 set aside for Singapore Citizens over the 5-year span. A total of **12,667 women were screened** from 1 May 2017 to 30 April 2018.



## SUPPORT FOR BREAST CANCER SURVIVORS AND CAREGIVERS

BCF provides various programmes and activities to empower women and family members whose lives are impacted by breast cancer so that no one walks the journey alone.

### BREAST CANCER FOUNDATION EDUCATION AND EMPOWERMENT PROGRAMME (BEEP)

BEEP is an integrated programme tailored for those impacted by breast cancer, primarily:

1. Survivors and women who are diagnosed
2. Caregivers and family members
3. Volunteers and staff of voluntary welfare organisations and hospital clinics
4. Corporations and human resource professionals

The programme is carefully curated by BCF and facilitated by industry-trained professionals including psychologists, dieticians, medical doctors, and exercise trainers. It is designed to empower its audience with the knowledge and management skills to cope with breast cancer. As of December 2017, BEEP 2 for caregivers and family members is made accessible for participation through a new e-learning platform.

### SUPPORT GROUPS



BCF's support groups provide an understanding and caring environment conducive for those affected by breast cancer. Each group holds a monthly meeting where participants are encouraged to express their emotions, ask questions, as well as share experiences and useful information with one another.

This year, a total of **12 support group meetings** were conducted with **221 unique participants**. Topics covered include Exercise & Nutrition and Surgery & Treatment. The Men's Support League was integrated with the Caregiver Support Group to enable both men and women caregivers to share their journey of providing support to those diagnosed with breast cancer.

**Date and time:** Meetings are held every second Saturday of the month, 10am – 12pm

## BEFRIENDERS PROGRAMME

BCF has a vibrant network of 33 volunteer befrienders – survivors of breast cancer who are committed to share their experiences to caregivers and women diagnosed with the condition. They offer their assistance and support such as providing face-to-face and telephone sharing sessions with women who are newly diagnosed or at the post-operative stage of breast cancer. Hospital visits by the volunteer befrienders are often accompanied by follow-up calls where besides providing information on care management and channels of community assistance, volunteer befrienders also offer emotional support and encouragement to them. From 1 May 2017 to 30 April 2018, volunteer befrienders attended to **69 women who were newly diagnosed**.

### PARTICIPATING HOSPITALS

- Changi General Hospital
- Khoo Teck Puat Hospital
- National University Hospital
- Ng Teng Fong General Hospital
- Tan Tock Seng Hospital

## HEALING THROUGH THE ARTS (HTTA)



BCF firmly believes that life can continue beyond breast cancer. Through various shared activities in arts and different forms of physical health and fitness exercises, breast cancer survivors bond and find a new lease of life through BCF's HTTA programme. Many of the instructors are passionate survivor-volunteers who are inspired to help others overcome the battle with breast cancer. This programme is exclusive to breast cancer survivors and features recreational and therapeutic activities aimed at rebuilding their physical and mental well-being for short and long-term recovery. From 1 May 2017 to 30 April 2018, **445 classes** had been conducted by **13 unique volunteers, with 136 unique participants** enrolled into the different programmes.

### LIST OF ACTIVITIES INCLUDES:

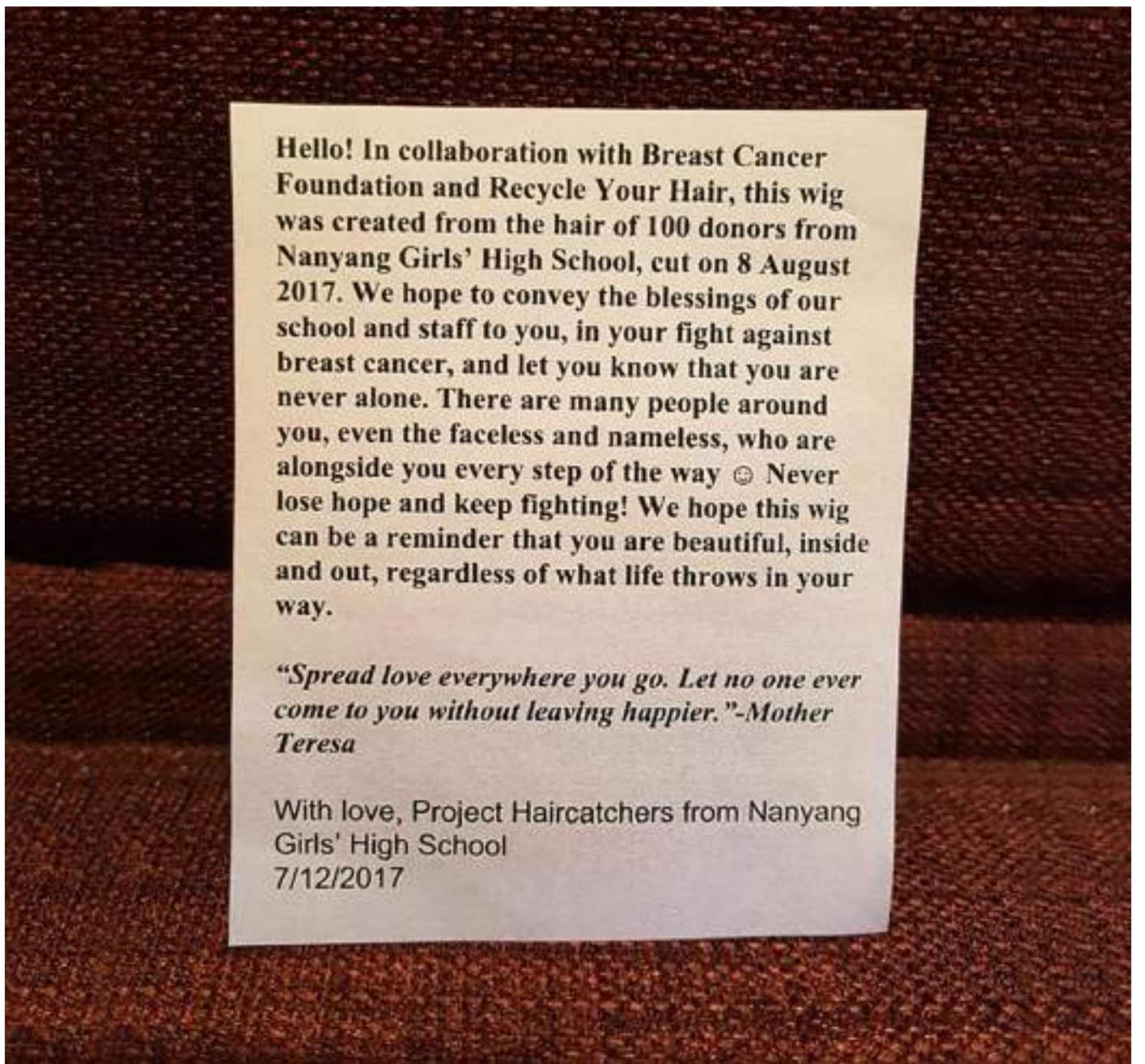
- Art Class
- BCF's Paddlers In The Pink Dragon Boating
- Cardio Dance
- Choir
- Nirvana Fitness
- Porcelain Painting
- Qigong
- Sewing Class
- Tai Chi
- Ukulele Class
- Yoga
- Zumba



## POSITIVE APPEARANCE SCHEME AND WIG LOAN PROGRAMME

BCF's Positive Appearance Scheme provides sponsorship of prostheses and bras for low-income women who are diagnosed with, or are survivors of breast cancer. The scheme is available at government-run and restructured hospitals.

BCF's Wig Loan programme helps members regain and enhance their self-confidence by loaning them wigs for free when they start experiencing hair-loss during the process of breast cancer treatments. Thanks to the young ladies from Project Hair Catchers at Nanyang Girls' High School, BCF received wigs created from the hair of **100 donors** in December 2017.



**Hello! In collaboration with Breast Cancer Foundation and Recycle Your Hair, this wig was created from the hair of 100 donors from Nanyang Girls' High School, cut on 8 August 2017. We hope to convey the blessings of our school and staff to you, in your fight against breast cancer, and let you know that you are never alone. There are many people around you, even the faceless and nameless, who are alongside you every step of the way 😊 Never lose hope and keep fighting! We hope this wig can be a reminder that you are beautiful, inside and out, regardless of what life throws in your way.**

*"Spread love everywhere you go. Let no one ever come to you without leaving happier."-Mother Teresa*

With love, Project Haircatchers from Nanyang Girls' High School  
7/12/2017

# ENGAGEMENT WITH PUBLIC, CORPORATIONS AND THE COMMUNITY

## CORPORATE AND INDIVIDUAL VOLUNTEERS

Everyone has the power to share and be a pillar of support so that no one needs to walk alone in their breast cancer journey. Volunteers are therefore integral to the advocacy and support efforts at BCF in the fight against breast cancer.

### AWARENESS TALKS



BCF organised **over 50 breast cancer awareness talks** for both corporate and community groups from 1 May 2017 to 30 April 2018. Altogether, **26 unique volunteer doctors and survivor sharers** conducted the awareness talks with BCF staff. Topics included the importance of early detection through regular screening, to the existing support that BCF provides to women diagnosed with breast cancer and their caregivers.

On 15 to 18 October 2017, BCF's corporate partner Genting Hong Kong (GHK) held an awareness talk in support of Breast Cancer Awareness Month on board their Star Cruises ship: Super Star Gemini. This was GHK's third year of involvement with BCF to raise breast cancer awareness among their staff and crew members. Strong corporate support is crucial in BCF's mission to eradicate breast cancer through early detection via advocating for regular breast checks.

### CHARITY BOOTH



During October 2017, corporate partners such as ANZA Casual Coffee, Carlson Wagonlit Travel, Marks & Spencer, Singapore Pools (Private) Limited, and Takashimaya Singapore Ltd supported BCF in a fundraising effort by either catering for a space to host BCF's charity booth at designated venues and/or activating their staff to help spread breast awareness messages and garner donations.

### GREAT EASTERN WOMEN'S RUN

Great Eastern Women's Run is Southeast Asia's largest all-women run. Commissioned by Great Eastern, the event was held on 12 November 2017, as it marked its 12<sup>th</sup> year in unifying women in health and life. BCF was one of the two beneficiaries of the event which saw **more than 13,000 enthusiastic female runners** gathered at The Float @ Marina Bay to kick-start the race.

### ICAP

2017 was ICAP's third consecutive year as the main sponsor of Pink Ribbon Walk (PRW). Their contribution enabled BCF to execute the event successfully to raise breast cancer awareness in Singapore every year.

### ICON SOC



20 employees from Icon SOC, one of Singapore's most respected medical oncology practices, participated in PRW 2017. They formed a 'sea of pink' during Pink Ribbon Parade to demonstrate solidarity with those affected by breast cancer. Icon SOC was also one of the co-sponsors of PRW 2017 and their contribution helped BCF in expanding community outreach with the life-saving message, 'Early Detection Saves Lives, Saves Breasts'.

### UPS FOUNDATION

UPS Foundation was the co-sponsor of PRW 2017. Their sponsorship enabled the participation of **136 breast cancer survivors, caregivers and individuals from the underprivileged communities** and empowered BCF to successfully conceptualise and execute Singapore's very first Pink Ribbon Parade. UPS Foundation also provided a grant to support BCF's 20<sup>th</sup> Anniversary Roving Exhibition. The grant enabled BCF to bring the roving exhibition to 6 different locations, thus raising breast cancer awareness to over **26,000 individuals** nationwide.



## PINK APPRECIATION COFFEE AND TEA (P.A.C.T)



BCF's inaugural P.A.C.T was held on 13 April 2018 at The Fullerton Hotel Singapore. The event was organised in appreciation of corporate partners who have stood by BCF in 2017 and contributed to the mission in eradicating breast cancer as a life-threatening condition. **Approximately 50 corporate partners** gathered to celebrate the milestones achieved and to make a pact to continue their efforts to nip breast cancer in the bud through collaborations with BCF. Long-time supporter – The Estée Lauder Companies was represented by Managing Director, Ms Lisa Chow who shared how they collaborated with BCF in raising breast cancer awareness in Singapore. CEO of Icon SOC, Ms Teena Pisarev, who came on board with BCF for the first time also shared how they have helped BCF through sponsorships and collaborations. BCF's member, Ms Cally Koh also shared her breast cancer journey with the audience at the event.

## PINK APPRECIATION NIGHT



In acknowledgement of all active volunteers for their dedication and continued support, the 20<sup>th</sup> Anniversary edition of Pink Appreciation Night was held on 29 November 2017 at Singapore Tangs Marriott Hotel. The dazzling night themed, 'Celebrating 20 Years of Royalty and Loyalty' saw **more than 120** of BCF's loyal supporters dressed as royalties from different countries and era. Guests sportingly competed for the title of 'Best Dressed Male and Female' while enjoying a fun-filled evening of performances and sumptuous food. Tokens of appreciation were also presented to volunteers during a special segment set aside for those who have been serving continuously since 10 to 20 years ago with BCF.

## PINK RETREAT



On 4 November 2017, a Pink Retreat was held at Kranji Farm Resort for **30 esteemed volunteers** of BCF who empowered the lives of women diagnosed with breast cancer in 2017. Volunteers such as support group leaders and coordinators, befrienders, survivor sharers of awareness talks and trainers of HTTA programme were invited in appreciation of their dedication to breast cancer awareness and support initiatives. A tea appreciation workshop was conducted by Hush Tea Bar. Volunteers were also brought on a farm tour to experience a session of prawning and herb planting.



## PINK HIGH TEA

Hosted on 27 October 2017 and supported by Shangri-La Hotel, Singapore, Pink High Tea was organised in appreciation of survivors who volunteered to share their personal breast cancer journey with others through awareness talks, media interviews and/or news publications to spread the life-saving message, 'Early Detection Saves Lives, Saves Breasts'.

## PINK RIBBON CHARITY GALA



Pink Ribbon Charity Gala dinner held on 29 September 2017 at The Fullerton Hotel Singapore was fully sponsored by Far East Organization and organised to thank all who played an instrumental role throughout BCF's 20-year journey. Graced by Guest-of-Honour Ms Indranee Rajah, former Senior Minister of State for Law and Finance and hosted by local DJ and jazz singer, Ms Claressa Monteiro, the event was attended by **more than 350 guests** comprising of survivors, caregivers, donors, corporate partners, and industry stakeholders. Various performances by volunteers included a fashion show where amongst the line-up of ladies strutting the runway were six breast cancer survivors – signifying that there can be life after breast cancer.





# ACKNOWLEDGEMENTS

BREAST CANCER FOUNDATION FY2017 / 2018 DONORS

(IN ALPHABETICAL ORDER)

We would like to express our deepest gratitude to all donors, sponsors, partners and supporters who have contributed and made a difference in the fight against breast cancer, whether they have chosen to make their contributions known or anonymous. While great care was taken to ensure accuracy of the acknowledgement list, we would like to seek your kind understanding should there be any oversights and/or omissions on our part.

## \$20,000 and above

- Banyan Tree Global Foundation Limited
- Bloomberg LLP
- Bridgestone Tyre Sales Singapore Pte Ltd
- Chew How Teck Foundation
- Great Eastern Life Assurance Co Ltd
- ICAP Singapore Pte Ltd
- Icon SOC
- Kwan Im Thong Hood Cho Temple
- Lee Foundation
- Pauline Chan
- Prudential AMPri Cleanroom Services Pte. Ltd.
- Tan Eng Hwa
- The Estée Lauder Companies
- Tote Board
- Transurban Properties Pte. Ltd.
- UBS AG Singapore
- UPS Foundation

## \$10,000 to \$19,999

- Antara Koh Private Limited
- BIHQ Pte Ltd
- Centenary Lodge No 7629 EC
- DFS Venture Singapore (Pte) Ltd
- Granz Holding Pte Ltd
- Jean Nasr
- Mervin Phng Hwee Leng
- N Sreenivasan
- NTUC Fairprice Foundation Ltd
- Singapore Oilwomen's Club
- Singapore St Andrews Society
- Tan Chee Meng
- Violet Yeo
- Wee Sin Tho

## \$5,000 to \$9,999

- Baccarat International (Pte) Ltd
- Barcode Marketing Pte Ltd
- Chew Gek Hiang
- Como Shambhala Pte Ltd
- Cornerstone Warehousing & Logistics Pte Ltd
- Davies Roxana
- Goodwood Park Hotel Limited
- Jimmy Seah
- Koh Tien Hua
- Lee Guo Zheng
- Lonza Biologics Tuas Pte Ltd
- Nomura Singapore Pte Ltd
- Pfizer Private Limited
- RSM Chio Lim LLP
- Singapore Hash House Harriets
- Soong Wei San
- Tan Chin Tuan Foundation
- Tan Choon Huat
- The Fullerton Hotel
- United Resources Marketing Services Pte Ltd
- Wacoal Singapore Pte Ltd
- Wood Mackenzie Asia Pacific Pte Ltd



## \$1,000 to \$4,999

- Ang Soo Wee
- Angela Wheaton
- Arfat Beebee B Noor Mohamed Abdul Latif
- Benny Ong Hock Siong
- Boey Siew Kin @ Boey Siew Hung
- Bowen Enterprises (Pte) Ltd
- Braintango Pte Ltd
- Breast Reconstruction Awareness Singapore
- Carlson Wagonlit Singapore Pte Ltd
- Charn May Ling
- Cheong Wei Kok Bernard
- Chopard (Asia) Pte Ltd
- Crabtree & Evelyn (Singapore) Pte Ltd
- Dell Global B.V
- Dr Georgette Chan Shao-Wah
- Dr See Hui Ti
- Dyson Operation Pte Ltd
- Edouard Merette
- G&L Surgical Clinic
- Goldman Sachs Singapore Pte Ltd
- Happie Diapers
- Integra Holdings Pte Ltd
- Intercontinental Communications Pte Ltd
- Interlocal Exim Pte Ltd
- Janet Ang Guat Har
- Jean-Michael Gross
- Liang Yi Tian
- Marsh Singapore
- Morgan Stanley
- Nanyang Girls' High School
- Newsman Realty Pte Ltd
- Nexus International School Singapore
- Ng Oi Wing
- Oscar Mico
- Osim International Pte Ltd
- Ow Peak Lan
- Peiqi Chen
- Perennial Real Estate Holding Limited
- Pinebridge Investment Singapore Limited
- Ramachandran Nagarajan
- Richard Ying-Yen Chen
- Ronald P.Stride
- SAP Asia Pte Ltd
- SG Caring Heart Ltd
- Singapore Press Holdings Limited
- Sok Seok Hoong Glacy
- Star Cruise Pte Ltd
- Stir Ventures Pte Ltd
- Sun Holdings Limited
- Takashimaya Singapore Limited
- Tan Beng Hin
- Tan Boon Howe Terence
- Tan Lee Hua
- The Bakery Depot Pte Ltd
- Zebra Technologies Asia Pacific Pte Ltd





# BREAST CANCER FOUNDATION

(UEN No: S97SS0137L)

## STATEMENT BY THE EXECUTIVE COMMITTEE AND FINANCIAL STATEMENTS

YEAR ENDED 30 APRIL 2018

### CONTENTS

Statement by the Executive Committee .....	34
Independent Auditor's Report .....	35
Statement of Financial Activities .....	38
Statement of Financial Position .....	39
Statement of Changes in Funds .....	40
Statement of Cash Flows .....	41
Notes to the Financial Statements .....	42

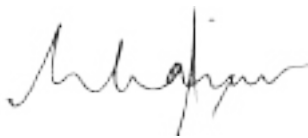


## STATEMENT BY THE EXECUTIVE COMMITTEE

In the opinion of Breast Cancer Foundation's ("BCF") Executive Committee, the accompanying financial statements are drawn up so as to give a true and fair view of the state of affairs of BCF as at 30 April 2018 and of the results, changes in funds and cash flows for the reporting year then ended and at the date of this statement there are reasonable grounds to believe BCF will be able to pay its debts as and when they fall due; and

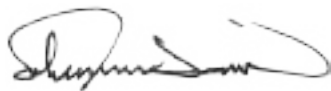
The Executive Committee approved and authorised these financial statements for issue.

On behalf of the Executive Committee



---

**Noorhayati Binte Mohamed Kassim (Noor Quek)**  
President



---

**Suhaimi Bin Zainul Abidin**  
Secretary



---

**Ramlee Bin Buang**  
Treasurer

Singapore  
26 July 2018

# INDEPENDENT AUDITOR'S REPORT TO THE MEMBERS OF BREAST CANCER FOUNDATION

## REPORT ON THE AUDIT OF THE FINANCIAL STATEMENTS

### OPINION

We have audited the accompanying financial statements of Breast Cancer Foundation ("BCF"), which comprise the statement of financial position as at 30 April 2018, and the statement of financial activities, statement of changes in funds and statement of cash flows for the reporting year then ended, and notes to the financial statements, including the significant accounting policies.

In our opinion, the accompanying financial statements are properly drawn up in accordance with the provisions of the Singapore Charities Act, Chapter 37 (the "Charities Act"), the Societies Act, Chapter 311 (the "Societies Act") and Charities Accounting Standard, so as to give a true and fair view of the financial position of BCF as at 30 April 2018 and of the financial performance, changes in equity and cash flows of BCF for the year ended on that date.

### BASIS FOR OPINION

We conducted our audit in accordance with Singapore Standards on Auditing (SSAs). Our responsibilities under those standards are further described in the auditor's responsibilities for the audit of the financial statements section of our report. We are independent of BCF in accordance with the Accounting and Corporate Regulatory Authority (ACRA) Code of Professional Conduct and Ethics for Public Accountants and Accounting Entities (ACRA Code) together with the ethical requirements that are relevant to our audit of the financial statements in Singapore, and we have fulfilled our other ethical responsibilities in accordance with these requirements and the ACRA Code. We believe that the audit evidence we have obtained is sufficient and appropriate to provide a basis for our opinion.

### OTHER INFORMATION

Executive Committee and management are responsible for the other information. The other information comprises the Statement by the Executive Committee and all information in the annual report, but does not include the financial statements and our auditor's report thereon.

Our opinion on the financial statements does not cover the other information and we do not express any form of assurance conclusion thereon.

In connection with our audit of the financial statements, our responsibility is to read the other information and, in doing so, consider whether the other information is materially inconsistent with the financial statements or our knowledge obtained in the audit or otherwise appears to be materially misstated. If, based on the work we have performed, we conclude that there is a material misstatement of this other information, we are required to report that fact. We have nothing to report in this regard.

# INDEPENDENT AUDITOR'S REPORT TO THE MEMBERS OF BREAST CANCER FOUNDATION

## RESPONSIBILITY OF EXECUTIVE COMMITTEE AND MANAGEMENT FOR THE FINANCIAL STATEMENTS

The Executive Committee and management are responsible for the preparation of financial statements that give a true and fair view in accordance with the provisions of the Act and FRSs, and for devising and maintaining a system of internal accounting controls sufficient to provide a reasonable assurance that assets are safeguarded against loss from unauthorised use or disposition; and transactions are properly authorised and that they are recorded as necessary to permit the preparation of true and fair financial statements and to maintain accountability of assets.

In preparing the financial statements, the Executive Committee and management are responsible for assessing BCF's ability to continue as a going concern, disclosing, as applicable, matters related to going concern and using the going concern basis of accounting unless the Executive Committee either intends to liquidate BCF or to cease operations, or has no realistic alternative but to do so.

The Executive Committee and management's responsibilities include overseeing BCF's financial reporting process.

## AUDITOR'S RESPONSIBILITIES FOR THE AUDIT OF THE FINANCIAL STATEMENTS

Our objectives are to obtain reasonable assurance about whether the financial statements as a whole are free from material misstatement, whether due to fraud or error, and to issue an auditor's report that includes our opinion. Reasonable assurance is a high level of assurance, but is not a guarantee that an audit conducted in accordance with SSAs will always detect a material misstatement when it exists. Misstatements can arise from fraud or error and are considered material if, individually or in the aggregate, they could reasonably be expected to influence the economic decisions of users taken on the basis of these financial statements.

As part of an audit in accordance with SSAs, we exercise professional judgement and maintain professional scepticism throughout the audit. We also:

- a) Identify and assess the risks of material misstatement of the financial statements, whether due to fraud or error, design and perform audit procedures responsive to those risks, and obtain audit evidence that is sufficient and appropriate to provide a basis for our opinion. The risk of not detecting a material misstatement resulting from fraud is higher than for one resulting from error, as fraud may involve collusion, forgery, intentional omissions, misrepresentations, or the override of internal control.
- b) Obtain an understanding of internal control relevant to the audit in order to design audit procedures that are appropriate in the circumstances, but not for the purpose of expressing an opinion on the effectiveness of BCF's internal control.
- c) Evaluate the appropriateness of accounting policies used and the reasonableness of accounting estimates and related disclosures made by Executive Committee.

# INDEPENDENT AUDITOR'S REPORT TO THE MEMBERS OF BREAST CANCER FOUNDATION

## AUDITOR'S RESPONSIBILITIES FOR THE AUDIT OF THE FINANCIAL STATEMENTS (CONT'D)

d) Conclude on the appropriateness of Executive Committee's use of the going concern basis of accounting and, based on the audit evidence obtained, whether a material uncertainty exists related to events or conditions that may cast significant doubt on BCF's ability to continue as a going concern. If we conclude that a material uncertainty exists, we are required to draw attention in our auditor's report to the related disclosures in the financial statements or, if such disclosures are inadequate, to modify our opinion. Our conclusions are based on the audit evidence obtained up to the date of our auditor's report. However, future events or conditions may cause BCF to cease to continue as a going concern.

e) Evaluate the overall presentation, structure and content of the financial statements, including the disclosures, and whether the financial statements represent the underlying transactions and events in a manner that achieves fair presentation.

We communicate with the Executive Committee regarding, among other matters, the planned scope and timing of the audit and significant audit findings, including any significant deficiencies in internal control that we identify during our audit.

## REPORT ON OTHER LEGAL AND REGULATORY REQUIREMENTS

In our opinion:

- (a) the accounting and other records required by the regulations enacted under the Societies Act to be kept by BCF have been properly kept in accordance with those regulations; and
- (b) the fund-raising appeals held during the reporting year have been carried out in accordance with regulation 6 of the Societies Regulations issued under the Societies Act and proper accounts and other records have been kept of the fund-raising appeal.

During the course of the audit, nothing has come to our attention that causes us to believe that during the reporting year:

- (a) The use of the donation moneys was not in accordance with the objectives of BCF as required under regulation 11 of the Charities (Institutions of a Public Character) Regulations; and
- (b) BCF has not complied with the requirements of regulation 15 (Fund-raising expenses) of the charities (Institutions of a Public Character) Regulations.

The engagement partner on the audit resulting in this independent auditor's report is Eu Chee Wei David.



RSM Chio Lim LLP  
Public Accountants and  
Chartered Accountants  
Singapore

26 July 2018

# STATEMENT OF FINANCIAL ACTIVITIES

YEAR ENDED 30 APRIL 2018

	NOTES	2018 \$	2017 \$
<b>Unrestricted Funds</b>			
<b>General fund</b>			
<b>Incoming resources</b>			
Incoming resources from generated funds			
Voluntary income	4	666,594	1,414,256
Activities for generating funds	5	1,073,083	938,240
Investment income	6	53,126	48,847
Incoming resources from charitable activities	7	39,395	48,340
Other incoming resources		16,765	27,472
<b>Total incoming resources</b>		<b>1,848,963</b>	<b>2,477,155</b>
<b>Resources expended</b>			
Cost of generating funds			
Costs of generating voluntary income	8	(266,337)	(286,956)
Charitable activities expenses	9	(1,423,639)	(1,793,128)
Governance costs	10	(120,141)	(145,263)
Other losses	11	(85,922)	–
<b>Total resources expended</b>		<b>(1,896,039)</b>	<b>(2,225,347)</b>
<b>(Outgoing) / incoming resources</b>		<b>(47,076)</b>	<b>251,808</b>
<b>Designated Fund</b>			
<b>Resources expended</b>			
Charitable activities expenses	9	(164,090)	–
<b>Resources expended</b>		<b>(164,090)</b>	<b>–</b>
<b>Specific Fund</b>			
<b>Resources expended</b>			
Charitable activities expenses	9	(310,825)	–
<b>Resources expended</b>		<b>(310,825)</b>	<b>–</b>
<b>Net (outgoing) / incoming resources</b>		<b>(521,991)</b>	<b>251,808</b>
<b>Reconciliation of funds</b>			
Total funds brought forward		8,123,755	7,871,947
<b>Total funds carried forward</b>		<b>7,601,764</b>	<b>8,123,755</b>

The accompanying notes form an integral part of these financial statements.



# STATEMENT OF FINANCIAL POSITION

AS AT 30 APRIL 2018

	NOTES	2018 \$	2017 \$
<b>ASSETS</b>			
<b><u>Non-current assets</u></b>			
Plant and equipment	14	79,328	134,879
Investments in bonds	15	511,125	251,375
<b>Total non-current assets</b>		<b>590,453</b>	<b>386,254</b>
<b><u>Current assets</u></b>			
Inventories	16	2,934	2,934
Trade and other receivables	17	95,201	174,159
Cash and cash equivalents	18	7,133,624	7,772,223
<b>Total current assets</b>		<b>7,231,759</b>	<b>7,949,316</b>
<b>Total assets</b>		<b>7,822,212</b>	<b>8,335,570</b>
<b>FUNDS AND LIABILITIES</b>			
<b><u>Current liabilities</u></b>			
Trade and other payables	19	220,448	211,815
<b>Total current liabilities</b>		<b>220,448</b>	<b>211,815</b>
<b>Total net assets</b>		<b>7,601,764</b>	<b>8,123,755</b>
<b><u>Unrestricted funds</u></b>			
General fund	20	4,760,779	4,807,855
Designated funds	20	1,335,910	1,500,000
<b>Total unrestricted funds</b>		<b>6,096,689</b>	<b>6,307,855</b>
<b><u>Specific fund</u></b>			
Specific fund	21	1,505,075	1,815,900
<b>Total specific fund</b>		<b>1,505,075</b>	<b>1,815,900</b>
<b>Total funds</b>		<b>7,601,764</b>	<b>8,123,755</b>
<b>Total funds and liabilities</b>		<b>7,822,212</b>	<b>8,335,570</b>

The accompanying notes form an integral part of these financial statements.

# STATEMENT OF CHANGES IN FUNDS

YEAR ENDED 30 APRIL 2018

	Total Fund \$	Specific Fund	Total unrestricted Fund \$	Unrestricted Funds			
		BEAM15 Phase 2 \$		General Fund \$	Designated Funds		
					Awareness Fund \$	Wellness Fund \$	Training Fund \$
<b>Current year</b>							
Balance at beginning of the year	8,123,755	1,815,900	6,307,855	4,807,855	500,000	500,000	500,000
Net outgoing resources for the financial year	(521,991)	(310,825)	(211,166)	(47,076)	(149,090)	(15,000)	–
<b>Balance at end of the year</b>	<b>7,601,764</b>	<b>1,505,075</b>	<b>6,096,689</b>	<b>4,760,779</b>	<b>350,910</b>	<b>485,000</b>	<b>500,000</b>
<b>Previous year</b>							
Balance at beginning of the year	7,871,947	1,815,900	6,056,047	4,556,047	500,000	500,000	500,000
Net incoming resources for the financial year	251,808	–	251,808	251,808	–	–	–
<b>Balance at end of the year</b>	<b>8,123,755</b>	<b>1,815,900</b>	<b>6,307,855</b>	<b>4,807,855</b>	<b>500,000</b>	<b>500,000</b>	<b>500,000</b>

The accompanying notes form an integral part of these financial statements.

# STATEMENT OF CASH FLOWS

YEAR ENDED 30 APRIL 2018

	NOTES	2018 \$	2017 \$
<b>Cash flows from operating activities</b>			
Net (outgoing) incoming resources for the year		(521,991)	251,808
Adjustments for:			
Interest income	6	(53,126)	(48,847)
Gain on disposal of plant and equipment		(120)	–
Depreciation of plant and equipment	14	59,724	131,290
<b>Operating cash flows before changes in working capital</b>		<b>(515,513)</b>	<b>334,251</b>
Inventories		–	11
Other receivables and prepayments		78,958	(82,800)
Trade and other payables		8,633	(236,547)
<b>Net cash flows (used in) generated from operating activities</b>		<b>(427,922)</b>	<b>14,915</b>
<b>Cash flows from investing activities</b>			
Purchase of plant and equipment	14	(4,173)	(103,628)
Proceeds from disposal of plant and equipment		120	–
Purchase of investment in bonds	15	(259,750)	–
Interest received		53,126	48,847
<b>Net cash flows used in investing activities</b>		<b>(210,677)</b>	<b>(54,781)</b>
<b>Net decrease in cash and cash equivalents</b>		<b>(638,599)</b>	<b>(39,866)</b>
Cash and cash equivalents, statement of cash flows, beginning balance		7,772,223	7,812,089
<b>Cash and cash equivalents, statement of cash flows, ending balance</b>	<b>18</b>	<b>7,133,624</b>	<b>7,772,223</b>

The accompanying notes form an integral part of these financial statements.

# NOTES TO THE FINANCIAL STATEMENTS

30 APRIL 2018

## 1. GENERAL

Breast Cancer Foundation ("BCF") is established in Singapore under the Societies Act, Chapter 311. The financial statements are presented in Singapore dollars. It is also subject to the provisions of the Charities Act, Chapter 37.

The Executive Committee ("the management") approved and authorised these financial statements for issue on the date of the Statement by the Executive Committee.

BCF's objectives are:

- a) to increase awareness of the public to the incidence of breast cancer and the importance of early detection;
- b) to provide patients and the public with information on standards of medical care that they can expect for the detection and treatment of breast cancer;
- c) to work closely with various cancer support groups and to centralise and optimise efforts against breast cancer and at eradicating breast cancer as a threatening disease in Singapore;
- d) to provide improved support and medical facilities for breast cancer patients and their families;
- e) to implement schemes to help breast cancer patients and their families who require financial support for their treatment;
- f) to financially support research in the prevention and cure for breast cancer; and
- g) in furtherance of the above objects, the Society may i) establish centres for the provision of support and medical facilities; ii) co-ordinate with medical organisations to provide training for medical staff to handle breast cancer patients more effectively; iii) liaise with government departments and employers in the private sector with regard to providing financial support and savings/insurance programs to breast cancer patients; iv) undertake any other activities as are incidental or conducive to the attainment of the above objectives.

The registered office is: 5 Stadium Walk #04-03/08, Kallang Leisure Park, Singapore 397693. BCF is domiciled in Singapore.

For the purpose of this financial statement, FY18 refers to the financial period from 1 May 2017 to 30 April 2018 and FY17 refers to the financial period from 1 May 2016 to 30 April 2017.

## ACCOUNTING CONVENTION

The financial statements have been prepared in accordance with the Charities Accounting Standard ("CAS") as issued by the Singapore Accounting Standards Council. The financial statements are prepared on a going concern basis under the historical cost convention except where the CAS requires an alternative treatment (such as fair values) as disclosed where appropriate in these financial statements. BCF is also subject to the provisions of the Societies Act, Chapter 311 and the Singapore Charities Act, Chapter 37.

## BASIS OF PREPARATION OF THE FINANCIAL STATEMENTS

The preparation of financial statements in conformity with generally accepted accounting principles requires the management to make estimates and assumptions that affect the reported amounts of assets and liabilities and disclosure of contingent assets and liabilities at the date of the financial statements and the reported amounts of revenues and expenses during the reporting year. Actual results could differ from those estimates. The estimates and assumptions are reviewed on an ongoing basis. Apart from those involving estimations, management has made judgements in the process of applying the entity's accounting policies. The areas requiring management's most difficult, subjective or complex judgements, or areas where assumptions and estimates are significant to the financial statements, are disclosed at the end of this footnote, where applicable.

## 2. SIGNIFICANT ACCOUNTING POLICIES AND OTHER EXPLANATORY INFORMATION

### 2A. SIGNIFICANT ACCOUNTING POLICIES

#### INCOME RECOGNITION

The income amount is the fair value of the consideration received or receivable from the gross inflow of economic benefits during the reporting year arising from the course of the ordinary activities of BCF and it is shown net of related tax and subsidies.

(i) Donations and corporate cash sponsorships

Donations and corporate cash sponsorships are accounted for when received, except for committed donations and corporate cash sponsorships that are recorded when the commitments are signed.

(ii) Fundraising

Income from special event is recognised when the event takes place.

(iii) Sale of goods

Income from the sale of goods is recognised when significant risks and rewards of ownership are transferred to the buyer, there is neither continuing managerial involvement to the degree usually associated with ownership nor effective control over the goods sold, and the amount of revenue and the costs incurred or to be incurred in respect of the transaction can be measured reliably.

(iv) Income from members' programme fees

Income from members' programme fees is recognised upon members' payment for enrolling programmes offered by BCF.

(v) Other income

Interest income is recognised using the effective interest rate. Rental subsidy is recognised on a time-proportion basis.

(vi) Government grants

A government grant is recognised at fair value in the statement of financial activities as an incoming resource when there is reasonable assurance that the conditions attaching to it will be complied with and that the grant will be received. Grants in recognition of specific expenses are recognised as income over the periods necessary to match them with the related costs that they are intended to compensate, on a systematic basis.

#### EMPLOYEE BENEFITS

Contributions to a defined contribution retirement benefit plan are recorded as an expense as they fall due. The entity's legal or constructive obligation is limited to the amount that it is obligated to contribute to an independently administered fund (such as the Central Provident Fund in Singapore, a government managed defined contribution retirement benefit plan). For employee leave entitlement the expected cost of short-term employee benefits in the form of compensated absences is recognised in the case of accumulating compensated absences, when the employees render service that increases their entitlement to future compensated absences; and in the case of non-accumulating compensated absences, when the absences occur. A liability for bonuses is recognised where the entity is contractually obliged or where there is constructive obligation based on past practice.



## 2. SIGNIFICANT ACCOUNTING POLICIES AND OTHER EXPLANATORY INFORMATION (CONT'D)

### 2A. SIGNIFICANT ACCOUNTING POLICIES (CONT'D)

#### INCOME TAX

As a charity registered under the Charities Act (Cap.37), BCF is exempted from tax on income and gains falling within section 13(1)(zm) of the Income Tax Act Chapter 134 to the extent that these are applied to its charitable objects. No tax charges have arisen in BCF.

#### PLANT AND EQUIPMENT

Plant and equipment are carried at cost on initial recognition and after initial recognition at cost less any accumulated depreciation and any accumulated impairment losses. Depreciation is provided on a straight-line method to allocate the gross carrying amounts of the assets less their residual values over their estimated useful lives of each part of an item of these assets. The annual rates of depreciation are as follows:

Office equipment	– 20%
Renovation	– 33%
Other assets	– 33%

An asset is depreciated when it is available for use until it is derecognised even if during that period the item is idle. Fully depreciated assets still in use are retained in the financial statements.

The gain or loss arising from the derecognition of an item of plant and equipment is measured as the difference between the net disposal proceeds, if any, and the carrying amount of the item and is recognised in profit or loss. The residual value and the useful life of an asset is reviewed at least at each end of the reporting year and, if expectations differ significantly from previous estimates, the changes are accounted for as a change in an accounting estimate, and the depreciation charge for the current and future periods are adjusted.

Cost also includes acquisition cost, borrowing cost capitalised and any cost directly attributable to bringing the asset or component to the location and condition necessary for it to be capable of operating in the manner intended by management. Subsequent costs are recognised as an asset only when it is probable that future economic benefits associated with the item will flow to the entity and the cost of the item can be measured reliably. All other repairs and maintenance are charged to profit or loss when they are incurred.

#### LEASES

Leases where the lessor effectively retains substantially all the risks and benefits of ownership of the leased assets are classified as operating leases. For operating leases, lease payments are recognised as an expense in profit or loss on a straight-line basis over the term of the relevant lease unless another systematic basis is representative of the time pattern of the user's benefit, even if the payments are not on that basis. Lease incentives received are recognised in profit or loss as an integral part of the total lease expense.

#### RESERVES POLICY

The Executive Committee has examined BCF's requirements for reserves in light of the main risks to BCF. The current strategy is to build reserves through planned operating surpluses. The reserves are needed to meet the working capital requirements of BCF and the Executive Committee is confident that at this level they would be able to continue the current activities of BCF in the event of a significant drop in funding. The unrestricted funds not committed or invested in tangible fixed assets held by the charity should be able to meet the short term working capital requirements of BCF.

## **2. SIGNIFICANT ACCOUNTING POLICIES AND OTHER EXPLANATORY INFORMATION (CONT'D)**

### **2A. SIGNIFICANT ACCOUNTING POLICIES (CONT'D)**

#### **INVENTORIES**

Inventories are measured at the lower of cost (first in first out method) and net realisable value. Net realisable value is the estimated selling price in the ordinary course of business less the estimated costs of completion and the estimated costs necessary to make the sale. Cost includes all costs of purchase, costs of conversion and other costs incurred in bringing the inventories to their present location and condition.

#### **INVESTMENT IN FINANCIAL ASSETS**

A financial asset is recognised on the statement of financial position when, and only when, the entity becomes a party to the contractual provisions of the instrument. An investment in a financial asset shall be measured initially at the transaction price excluding transaction costs, if any, which shall be recognised as expenditure immediately in the statement of financial activities. Subsequent to initial measurement, an investment in a financial asset shall be measured at cost less any accumulated impairment losses.

#### **TRADE AND OTHER RECEIVABLES**

Trade and other receivables excluding prepayments shall be initially recognised at their transaction price, excluding transaction costs, if any. Transaction costs shall be recognised as expenditure in the Statement of Financial Activities as incurred. Prepayments shall be initially recognised at the amount paid in advance for the economic resources expected to be received in the future.

After initial recognition, trade and other receivables excluding prepayments shall be measured at cost less any accumulated impairment losses. Prepayments shall be measured at the amount paid less the economic resources received or consumed during the financial period.

#### **CASH AND CASH EQUIVALENTS**

Cash and cash equivalents include bank and cash balances, on demand deposits and any highly liquid debt instruments purchased with an original maturity of three months or less. For the statement of cash flows the item includes cash and cash equivalents less cash subject to restriction and bank overdrafts payable on demand that form an integral part of cash management.

#### **TRADE AND OTHER PAYABLES**

Trade and other payables excluding accruals shall be recognised at their transaction price, excluding transaction costs, if any, both at initial recognition and at subsequent measurement. Transaction costs shall be recognised as expenditure in the Statement of Financial Activities as incurred. Accruals shall be recognised at the best estimate of the amount payable.

#### **FUNDS**

Fund balances restricted by outside sources are so indicated and are distinguished from unrestricted funds allocated to restricted purposes if any by action of the management. Externally restricted funds may only be utilised in accordance with the purposes established by the source of such funds and are in contrast with unrestricted funds over which management retains full control to use in achieving any of its institutional purposes. An expense resulting from the operating activities of a fund that is directly attributable to the fund is charged to that fund.

## 2. SIGNIFICANT ACCOUNTING POLICIES AND OTHER EXPLANATORY INFORMATION (CONT'D)

### 2B. OTHER EXPLANATORY INFORMATION

#### PROVISION

A liability or provision is recognised when there is a present obligation (legal or constructive) as a result of a past event, it is probable that an outflow of resources embodying economic benefits will be required to settle the obligation and a reliable estimate can be made of the amount of the obligation. A provision is made using best estimates of the amount required in settlement and where the effect of the time value of money is material, the amount recognised is the present value of the expenditures expected to be required to settle the obligation using a pre-tax rate that reflects current market assessments of the time value of money and the risks specific to the obligation. The increase in the provision due to passage of time is recognised as interest expense. Changes in estimates are reflected in profit or loss in the reporting year they occur.

### 2C. CRITICAL JUDGEMENTS, ASSUMPTIONS AND ESTIMATION UNCERTAINTIES

There were no critical judgements made in the process of applying the accounting policies that have the most significant effect on the amounts recognised in the financial statements. There were no key assumptions concerning the future, and other key sources of estimation uncertainty at the end of the reporting year, that have a significant risk of causing a material adjustment to the carrying amounts of assets and liabilities within the next reporting year.

## 3. RELATED PARTY RELATIONSHIP AND TRANSACTIONS

Related parties include all of the following:

(a) A person or a close member of that person's family if that person:

- (i) has control or joint control over the reporting entity;
- (ii) has significant influence over the reporting entity; or
- (iii) is a governing board member, trustee or member of the key management personnel of the reporting entity or of a parent of the reporting entity; and

(b) An entity is related to the reporting entity if any of the following conditions apply:

- (i) The entity and the reporting entity are members of the same group;
- (ii) One entity is an associate or joint venture of the charity (or an associate or joint venture of a member of a group of which the charity is a member);
- (iii) Both entities are joint ventures of the same third party;
- (iv) One entity is a joint venture of a third entity and the other entity is an associate of the third entity;
- (v) The entity is controlled or jointly controlled by a person identified in (a);
- (vi) A person identified in (a)(i) has significant influence over the entity or is a governing board member, trustee or member of the key management personnel of the entity (or of a parent of the entity)

BCF has not met individual expenses incurred by Executive Committee Members for services provided to BCF, either by reimbursement of the Executive Committee Members or by providing the Executive Committee Members with an allowance or by direct payment to a third party. The Executive Committee Members did not receive any compensation during the year.

There are no related party transactions for the financial years ended 30 April 2017 and 2018.

All Executive Committee Members and employees of Breast Cancer Foundation are required to read and understand the conflict of interest policy in place and make full disclosure of any interests, relationships, and holdings that could potentially result in a conflict of interest. When a conflict of interest situation arises, the Member/employee shall abstain from participating in the discussion, decision-making and voting on the matter.

**3. RELATED PARTY RELATIONSHIP AND TRANSACTIONS (CONT'D)****3A. KEY MANAGEMENT COMPENSATION**

	2018 \$	2017 \$
Salaries and other short-term employee benefits	140,484	137,955

There was no key management personnel who received more than \$100,000 each in annual remuneration in 2018.

**4. VOLUNTARY INCOME**

	2018 \$	2017 \$
Donations	656,750	794,182
Grants (Note a)	9,844	614,374
Sponsorships	–	5,700
	666,594	1,414,256

Note a

Included in the grants are "Care & Share" grant of \$NIL (2017: \$600,000) received from the National Council of Social Service.

**5. ACTIVITIES FOR GENERATING FUNDS**

	2018 \$	2017 \$
Pink Ribbon Walk	214,718	147,072
Pink Ribbon Charity Golf	–	430,764
'Wear the Pink Ribbon' Campaign	247,980	360,404
Charity Gala	478,797	–
Charity Draw	111,248	–
Other fundraising events	20,340	–
	1,073,083	938,240

**6. INVESTMENT INCOME**

	2018 \$	2017 \$
Interest income	53,126	48,847

**7. INCOMING RESOURCES FROM CHARITABLE ACTIVITIES**

	2018 \$	2017 \$
Members' programme fees	6,870	7,606
Rental subsidy	32,525	40,734
	39,395	48,340



**8. COSTS OF GENERATING VOLUNTARY INCOME**

	2018 \$	2017 \$
Pink Ribbon Walk	176,701	163,555
Pink Ribbon Charity Golf	–	48,327
'Wear the Pink Ribbon' Campaign	30,727	47,523
Charity Gala	21,233	–
Charity Draw	8,255	–
<b>Subtotal</b>	<b>236,916</b>	<b>259,405</b>
Support costs		
- Staff related costs (Note 12)	28,341	27,551
- Financial institutional charges	1,080	–
<b>Subtotal</b>	<b>29,421</b>	<b>27,551</b>
<b>Total</b>	<b>266,337</b>	<b>286,956</b>

**9. CHARITABLE ACTIVITIES EXPENSES**

	2018 \$	2017 \$
<b>General Fund</b>		
Support & Volunteer ("S&V") programme expenses		
- Healing Through the Arts	14,728	11,449
- Counselling course	2,140	39,482
- Positive appearance programme	2,140	3,545
- Coaching fees	9,560	9,320
- Volunteers' welfare	3,092	10,363
- Visitation	465	7,445
- Volunteers' appreciation event	20,579	17,397
- Programme expenses	26,110	3,554
- Festivities	4,887	5,159
- Support costs (Note a)	487,836	588,351
- Mammogram screening (Note b)	340,750	619,350
<b>Subtotal</b>	<b>912,287</b>	<b>1,315,415</b>
<b>General Fund</b>		
Awareness, Communications & Education ("ACE") programme expenses		
- Events' expenses	12,329	9,448
- Support costs (Note a)	499,023	468,265
<b>Subtotal</b>	<b>511,352</b>	<b>477,713</b>
<b>Total</b>	<b>1,423,639</b>	<b>1,793,128</b>
<b>Specific Fund</b>		
BEAM15 (Phase 2)		
- Mammogram screening (Note b)	310,825	–
	310,825	–

**9. CHARITABLE ACTIVITIES EXPENSES (CONT'D)**

	2018 \$	2017 \$
<b>Designated Fund</b>		
- Charity Draw	25,000	-
- Charity Gala	35,000	-
- Other fundraising events	78,387	-
- Other costs	25,703	-
	164,090	-

	S&V		ACE	
<u>Note a</u>	2018 \$	2017 \$	2018 \$	2017 \$
Support costs comprise:				
- Staff related costs (Note 12)	319,134	396,045	348,764	274,283
- Rental	34,702	34,702	11,567	11,567
- Consumables	10,164	11,139	86,633	109,538
- Other costs	45,185	12,035	25,842	28,067
- Upkeep costs	76,709	132,216	25,570	44,072
- Financial institutional charges	1,942	2,214	647	738
	487,836	588,351	499,023	468,265

Note b

Mammogram screening cost of \$NIL (2017: \$619,350) was funded through "Care & Share" grant (see Note 4) from the general fund.

**10. GOVERNANCE COSTS**

	2018 \$	2017 \$
Audit fees		
- Current year	16,520	16,629
	16,520	16,629
Support costs		
- Staff related costs (Note 12)	60,289	68,531
- Financial institution charges	648	738
- Rental	11,567	11,567
- Consumables	3,388	3,726
- Other costs	2,159	-
- Upkeep costs	25,570	44,072
	103,621	128,634
Total	120,141	145,263

**11. OTHER LOSSES**

	2018 \$	2017 \$
Allowance for impairment on trade receivables (Note 17)	85,922	–

**12. EMPLOYEE BENEFITS EXPENSE**

2018	Cost of generating voluntary income \$	S&V \$	ACE \$	Governance \$	Total \$
Salaries and bonuses	24,767	263,912	295,165	47,768	631,612
Employer's contribution to Central Provident Fund & other statutory contributions	3,178	34,307	46,627	5,945	90,057
Foreign worker levy	396	2,376	792	396	3,960
Staff benefits and related costs	–	18,539	6,180	6,180	30,899
	28,341	319,134	348,764	60,289	756,528

2017	Cost of generating voluntary income \$	S&V \$	ACE \$	Governance \$	Total \$
Salaries and bonuses	23,996	336,437	231,544	54,893	646,870
Employer's contribution to Central Provident Fund & other statutory contributions	3,163	39,403	36,004	6,686	85,256
Foreign worker levy	392	2,349	783	392	3,916
Staff benefits and related costs	–	17,856	5,952	6,560	30,368
	27,551	396,045	247,283	68,531	766,410

**13. TAX EXEMPT RECEIPTS**

BCF enjoys a concessionary tax treatment whereby qualifying donors are granted enhanced tax deduction for the donations made to BCF. The tax deduction is 2.5 times effective 1 January 2016. This status was renewed for 2 years with effect from February 2018 under the Health Endowment Fund Decentralised Scheme.

	2018 \$	2017 \$
BCF issued their exempt receipts for donations collected	744,275	665,128

**14. PLANT AND EQUIPMENT**

	Office equipment \$	Renovation \$	Other assets \$	Total \$
Cost:				
At 1 May 2016	20,724	260,948	188,499	470,171
Additions	4,351	–	99,277	103,628
Disposals	(845)	–	–	(845)
At 30 April 2017	24,230	260,948	287,776	572,954
Additions	1,284	–	2,889	4,173
Disposals	–	–	(8,678)	(8,678)
At 30 April 2018	25,514	260,948	281,987	568,449
Accumulated depreciation:				
At 1 May 2016	11,243	160,836	135,551	307,630
Charge for the year	4,285	80,983	46,022	131,290
Disposals	(845)	–	–	(845)
At 30 April 2017	14,683	241,819	181,573	438,075
Charge for the year	3,662	10,129	45,933	59,724
Disposals	–	–	(8,678)	(8,678)
At 30 April 2018	18,345	251,948	218,828	489,121
Net book value:				
At 30 April 2017	9,547	19,129	106,203	134,879
At 30 April 2018	7,169	9,000	63,159	79,328
Allocation of the depreciation expense included in upkeep costs:			<b>2018</b>	<b>2017</b>
			\$	\$
Charitable activities expenses			47,779	105,032
Governance costs			11,945	26,258
Total			59,724	131,290

**15. INVESTMENTS IN BONDS**

	<b>2018</b>	<b>2017</b>
	\$	\$
Movement during the year:		
Cost at beginning	251,375	251,375
Additions	259,750	–
Cost at end of the year	511,125	251,375
Balance is made up of:		
Quoted bonds in corporation	511,125	251,375
Market value of quoted investments (Level 1)	513,034	261,225

The quoted bonds have a rate of interest of 3.4875% and 3.7000% (2017: 3.4875%) per annum and matures in 2020.



<b>16. INVENTORIES</b>	<b>2018</b>	<b>2017</b>
	<b>\$</b>	<b>\$</b>
Merchandise	2,934	2,934

<b>17. TRADE AND OTHER RECEIVABLES</b>	<b>2018</b>	<b>2017</b>
	<b>\$</b>	<b>\$</b>
<u>Trade receivables</u>		
Outside parties	111,022	–
Less allowance for impairment (Note c)	(85,922)	–
Net trade receivables - subtotal	25,100	–
<u>Other receivables</u>		
Deposits for securing of services	15,163	15,813
Other receivables	24,803	9,874
Prepayments	30,135	148,472
Net other receivables - subtotal	70,101	174,159
Total trade and other receivables	95,201	174,159
Movements in above allowance on trade receivables:		
Balance at beginning of the year	–	–
Change for trade receivables to statement of financial activities included in other loss (Note 11) (Note c)	85,922	–
Balance at end of the year	85,922	–

Note c

The provision for impairment of trade receivables pertains to registration fees due from an external vendor, who was the outsourced event management for Pink Ribbon Walk. The provision was made based on the net receivable amount after deduction of event management fees payable to the external vendor.

<b>18. CASH AND CASH EQUIVALENTS</b>	<b>2018</b>	<b>2017</b>
	<b>\$</b>	<b>\$</b>
Not restricted in use	7,133,624	7,772,223
Interest earning balances	5,005,772	3,004,652

The rate of interest for the cash on interest earning accounts is between 0.5% and 1.5% (2017: 0.10% and 1.10%) per annum.

<b>19. TRADE AND OTHER PAYABLES</b>	<b>2018</b>	<b>2017</b>
	<b>\$</b>	<b>\$</b>
Outside parties and accrued liabilities	220,448	151,215
Deferred income	–	60,600
Total trade and other payables	220,448	211,815

## 20. UNRESTRICTED FUNDS

Unrestricted income funds refer to funds that can be spent at the discretion of the governing Executive Committee Members for any purpose of the charity.

Designated funds are part of unrestricted funds but with a designated usage that is approved by the governing Executive Committee Members.

Awareness Fund is for the provision of activities to the public to create awareness on breast cancer.

Wellness Fund is for the provision of activities to enhance the physical, psychological and therapeutic well-being of breast cancer survivors of BCF. It is applicable for breast cancer survivors who are members of BCF.

Training Fund is for the provision of training to equip adequate skills and knowledge to enable an individual to have better performance in his/her work and/or life. It is applicable for breast cancer survivors who are members of BCF, active volunteers who are members of BCF, staff and Executive Committee Members.

During the reporting year, a total of \$164,090 were drawn down from the awareness and wellness fund to fund the programmes and activities held by BCF.

	<b>Designated funds</b>			
	Awareness Fund \$	Wellness Fund \$	Training Fund \$	Total Fund \$
<b>Current year:</b>				
Balance at beginning of the year	500,000	500,000	500,000	1,500,000
Utilised during the year	(149,090)	(15,000)	–	(164,090)
Balance at end of the year	350,910	485,000	500,000	1,335,910
<b>Previous year:</b>				
Balance at beginning and end of the year	500,000	500,000	500,000	1,500,000

## 21. SPECIFIC FUND

BEAM15 Phase 1 was a programme by BCF to encourage low income women to go for mammogram screening and the cost of the screening is fully funded by BCF. Phase 1 of this programme started in April 2013 and was fully committed by April 2014.

BEAM15 Phase 2 is an extension of BEAM15 Phase 1 and a commitment by BCF to encourage low income women to go for mammogram screening and the cost of the screening is fully funded by BCF. The program will run until October 2019. BCF will disburse \$400,000 annually, any variations will be at the sole discretion and approval of BCF. This specific fund cannot be used for other purposes and will not be transferred to General Fund in future years.

## 21. SPECIFIC FUND (CONT'D)

Commencing FY2016, the mammogram screening cost is funded by the "Care & Share" grant and is fully expended in FY2018. Hence the specific fund will continue to fund the program until October 2019.

	2018 \$	2017 \$
Balance at beginning of the year	1,815,900	1,815,900
Utilised during the year	(310,825)	–
Balance at end of the year	1,505,075	1,815,900

## 22. OPERATING LEASE PAYMENT COMMITMENTS - AS LESSEE

At the end of the reporting year, the total of future minimum lease payments under non-cancellable operating leases are as follows:

	2018 \$	2017 \$
Not later than one year	53,016	57,836
Later than one year and not later than five years	–	53,016
Rental expense for the reporting year	57,836	57,836

Operating lease payments are for rentals payable by BCF for its premises. The lease rental terms are negotiated for a term of five years.

## 23. EVENTS AFTER THE END OF THE REPORTING YEAR

Subsequent to the end of the reporting year, BCF issued a writ of summon against a vendor to recover the registration fees for Pink Ribbon Walk. The amount due from the vendor of \$111,022 was recognised as trade receivable in Note 17 and the amount due to the vendor of \$25,100 relating to residual balance for events management services provided was recognised as trade payables in Note 19. An impairment loss on trade receivables of \$85,922 was provided on the net receivable after deduction of amounts payable to the vendor by BCF as at the end of the financial year.







**BREAST CANCER**  
FOUNDATION

5 Stadium Walk  
#04-03/08  
Kallang Leisure Park  
Singapore 397693  
T: 6352 6560 | F: 6352 5808  
Helpline: 6356 0123  
enquiries@bcf.org.sg

**[www.bcf.org.sg](http://www.bcf.org.sg)**